



TENTERDEN
TOWN COUNCIL



Minimal changes are proposed to the front elevation which has not changed significantly in recent memory. A light touch refurbishment of the existing window will take place to open up the currently blocked panes.



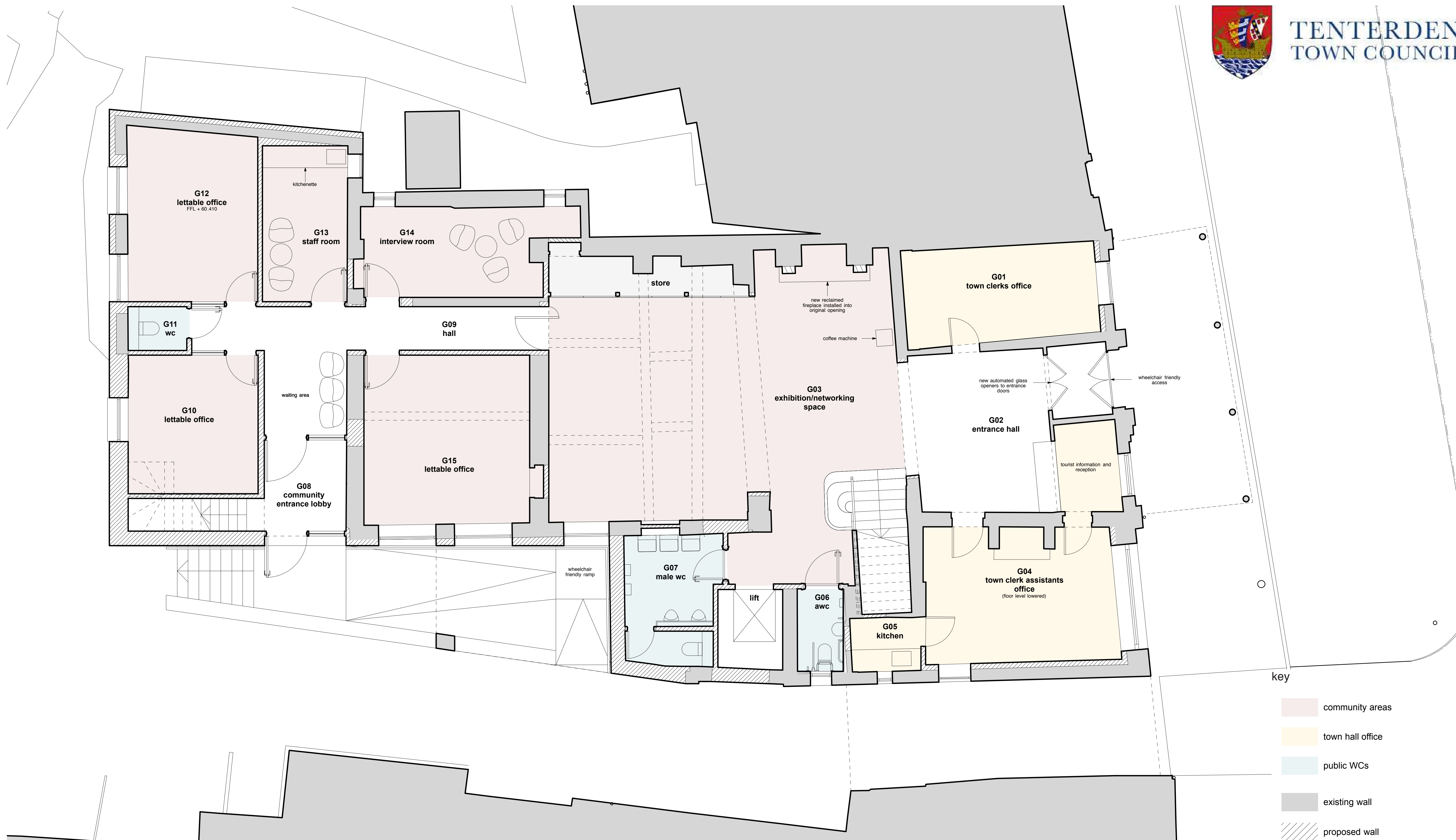
existing main entrance

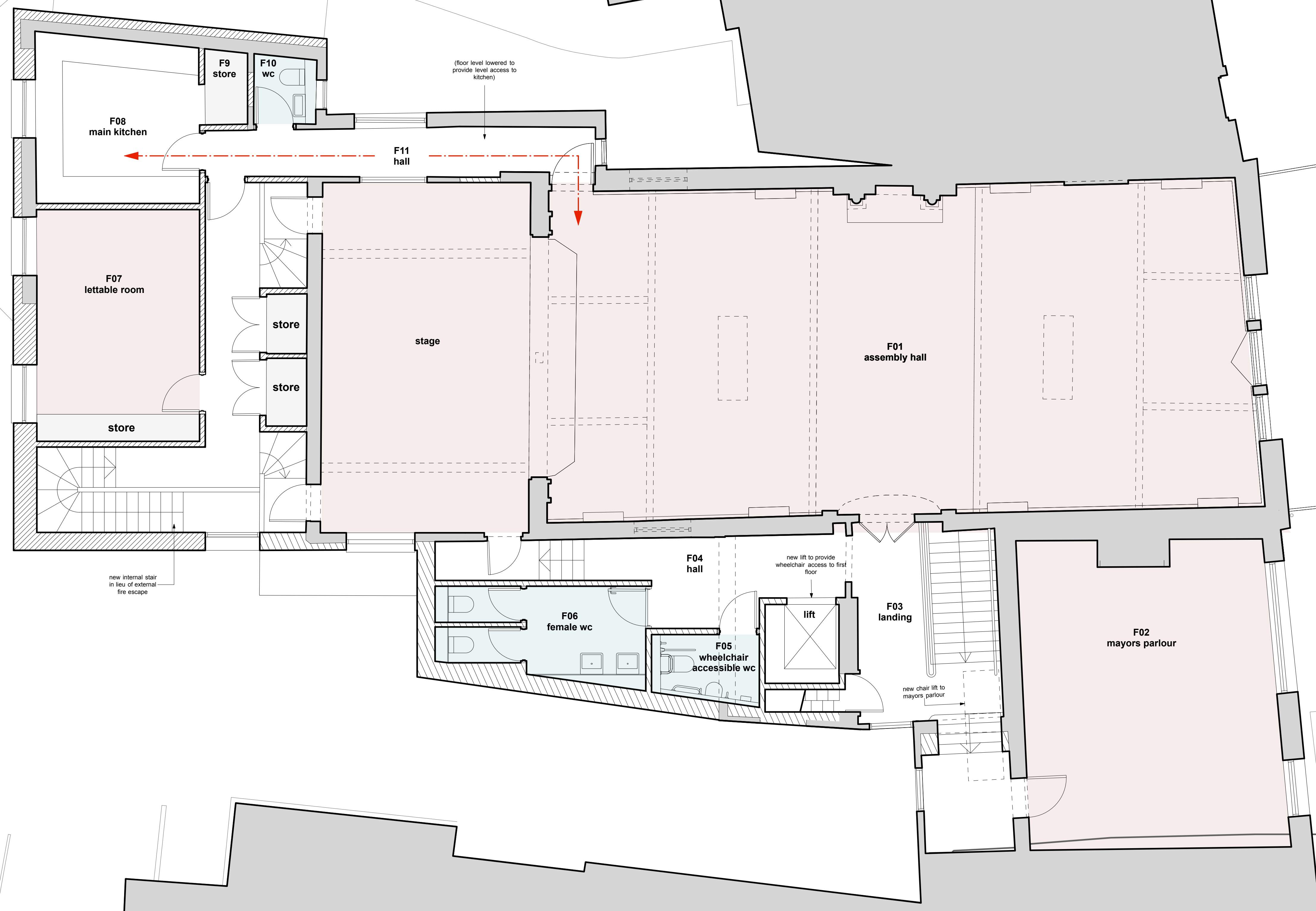


main entrance c1912

**THEIS
+KHAN**

proposed main elevation to Tenterden High Street



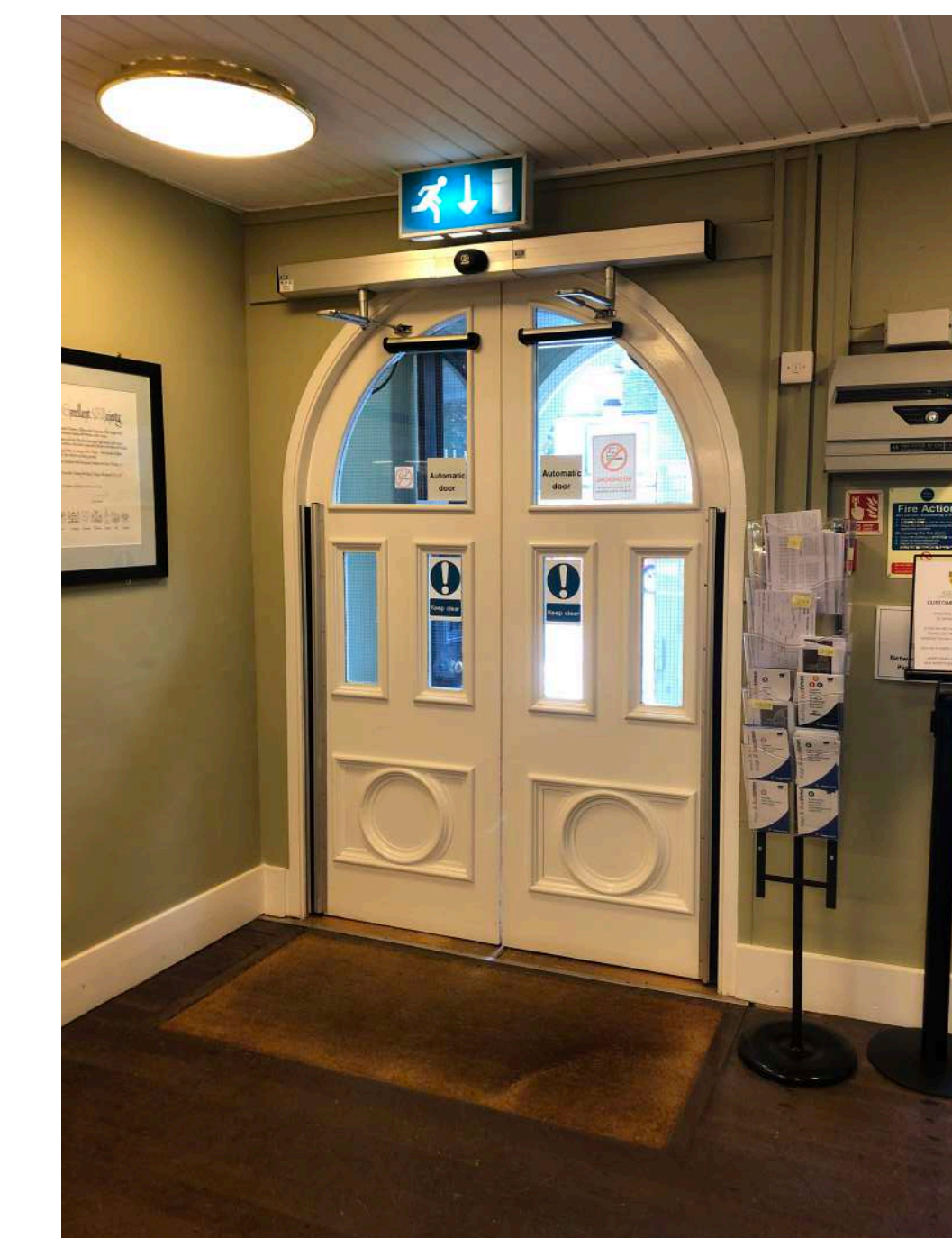


key

- community areas
- town hall office
- public WCs
- existing wall
- proposed wall



Walls will be removed and adapted at ground floor in order to open up the front entrance hall to the new exhibition and networking space



existing front entrance doors



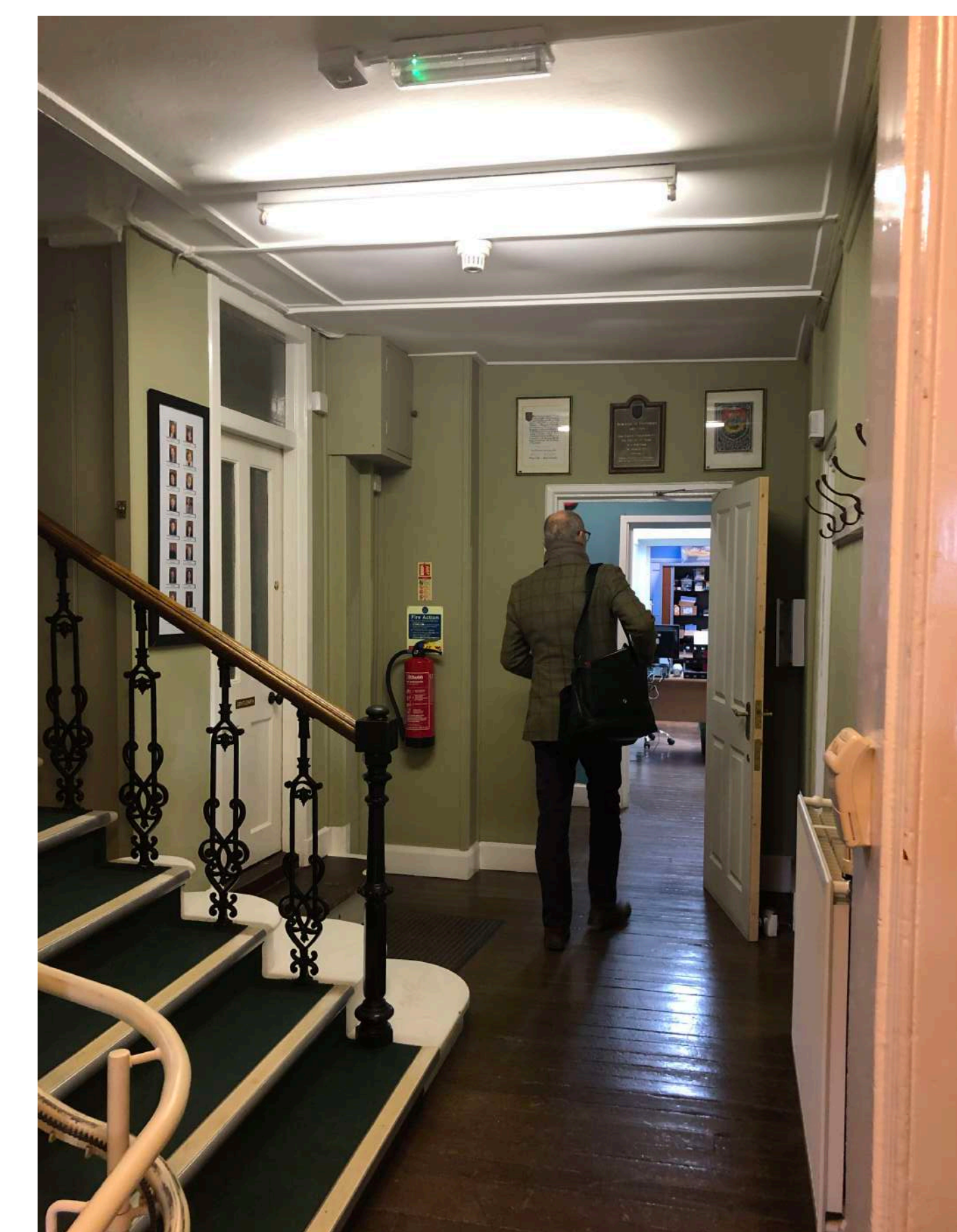
existing view of main entrance



The vision behind the reordering of the Town Hall is to provide space designed for maximum community benefit affording flexible accommodation for cultural, educational, social, wellness and business usage.

The major changes are on the ground floor where the entrance will be opened up to create a light and welcoming space for the public to access with a reception area and tourist information centre; this area will reflect some of the history and heritage of the building. Council staff will occupy offices at the front of the building and thus be much more customer facing.

The light and open space will provide a networking and exhibition area where it is hoped local people will exhibit their individual work - paintings, woodwork, pottery, sculpture, needlecraft, metalwork - and meet and exchange ideas in a pleasant environment.



existing view of proposed exhibition area

proposed community space



proposed area used for a reception



proposed area used for an exhibition



The rear of the building will be accessed by a pathway suitable for wheelchairs.

It will contain a suite of offices, including one for Ashford Borough Council and CAB. This area will be self contained with its own facilities and leased on an hourly basis for business, meetings, interviews and other activities where a discreet environment is desirable.

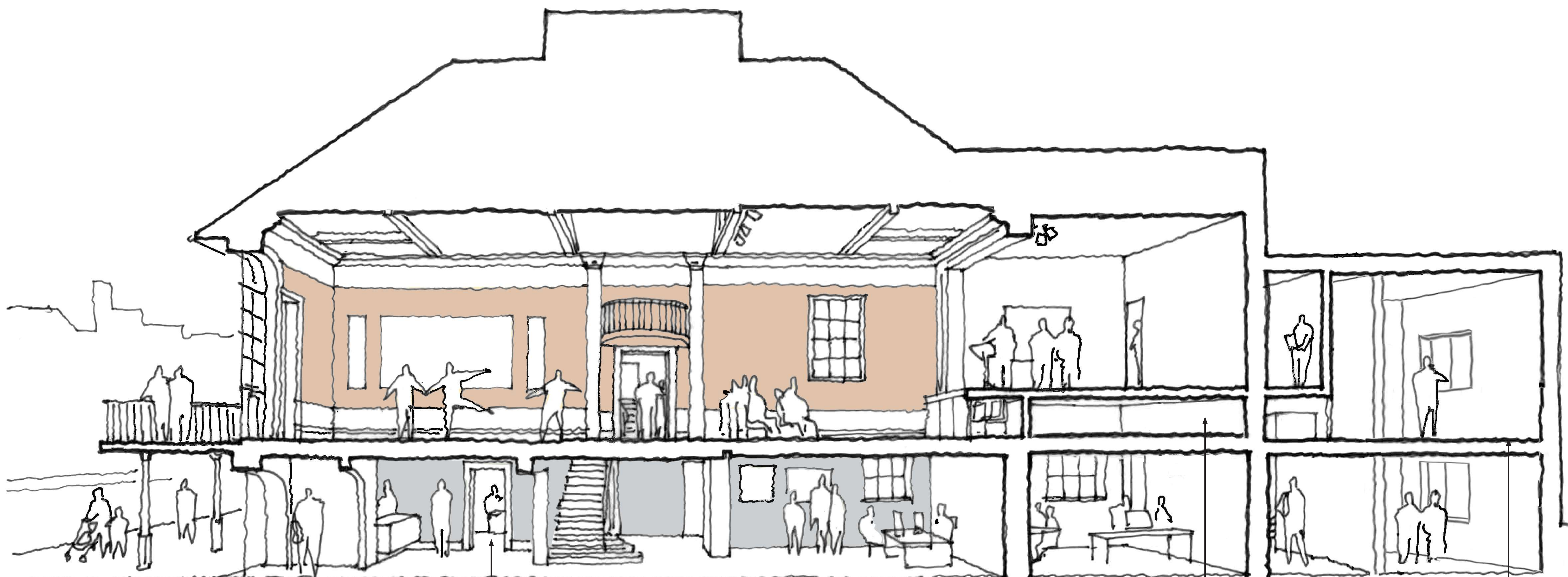
Free WiFi and printing/photocopying on a pay as you go basis will be available. Spaces will have natural light and be furnished with basic office furniture.



existing offices



proposed community offices



existing entrance hall opened up to new
exhibition / community space

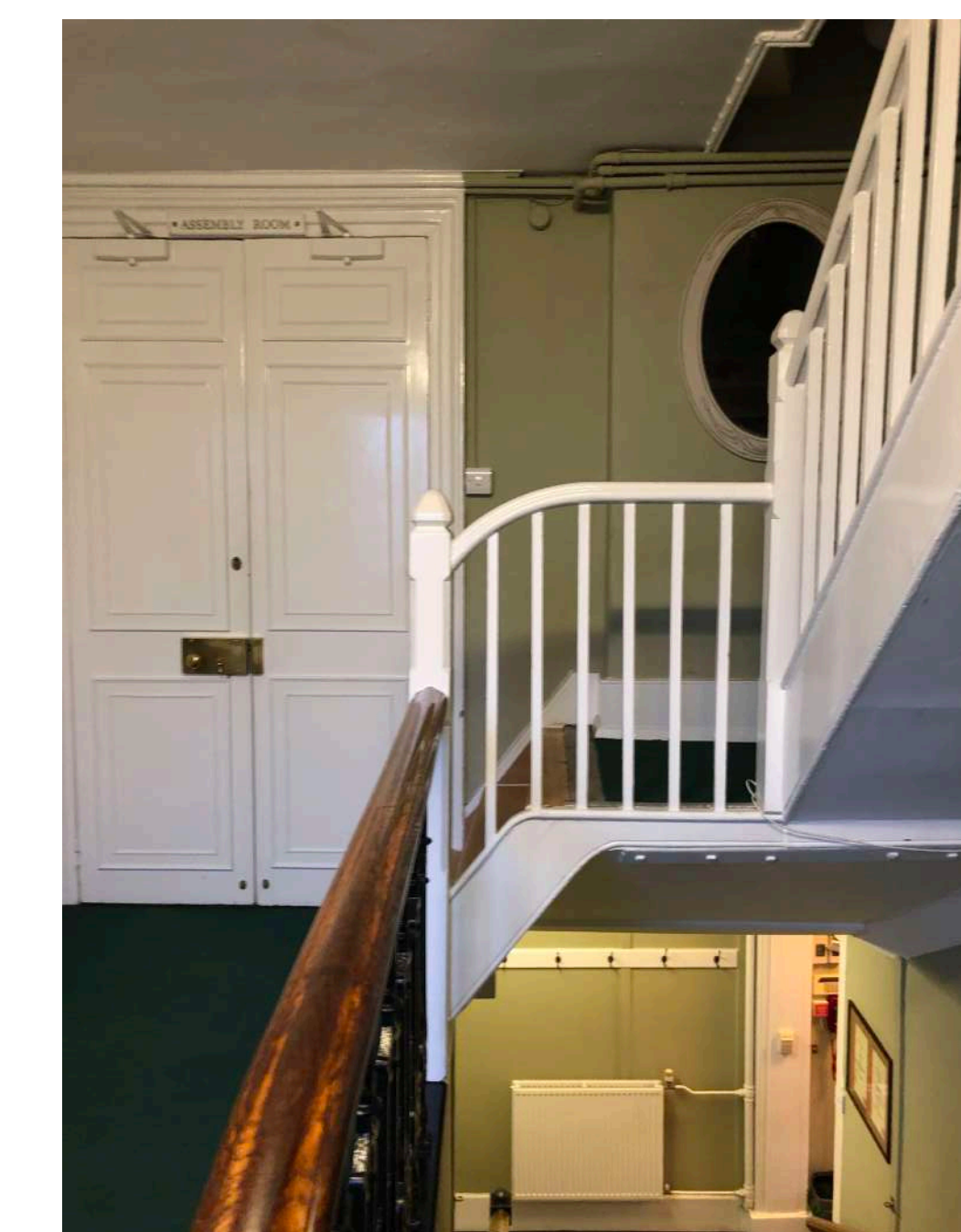
existing stage level with additional storage
below

existing floor level to main catering kitchen
and corridor reduced to same floor level
as assembly room to allow level access



The stair case to the upper floor will be reinstated to its former glory and a lift will be fitted so wheelchair users can access the Assembly Room for events and performances hitherto unachievable.

A new improved platform lift will be fitted so the Mayor's Parlour can be reached for ceremonies held there.



existing first floor landing

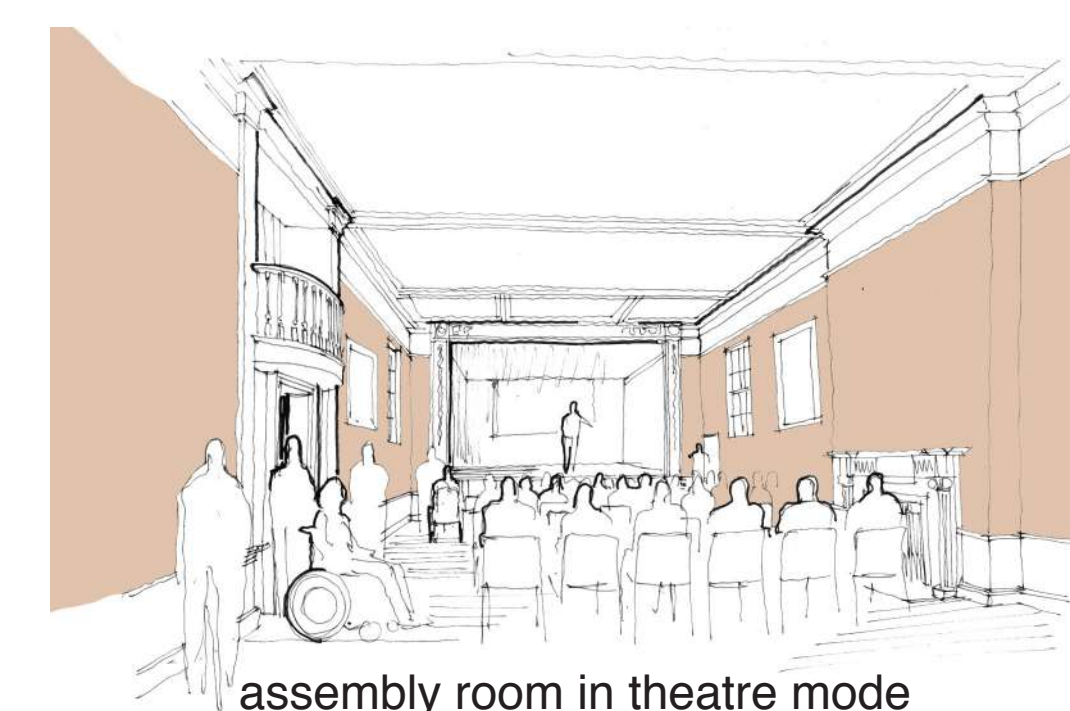


Decorations and soft furnishing, new lighting and AV system will help improve the look, feel and functionality of the Assembly Room in the future to better accommodate conferences, weddings, performances and exhibitions.

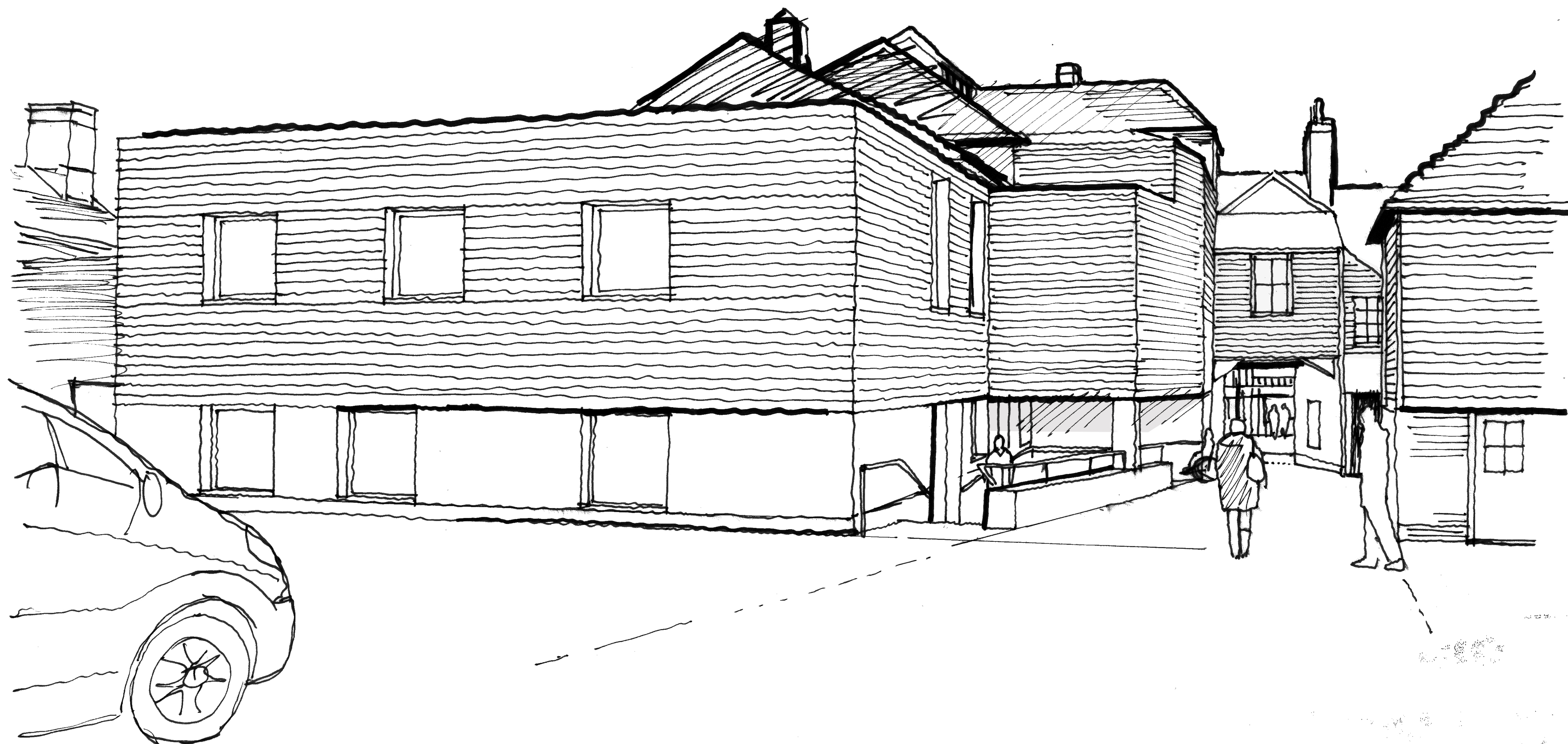
All basic services will be upgraded to make the building much more energy efficient.



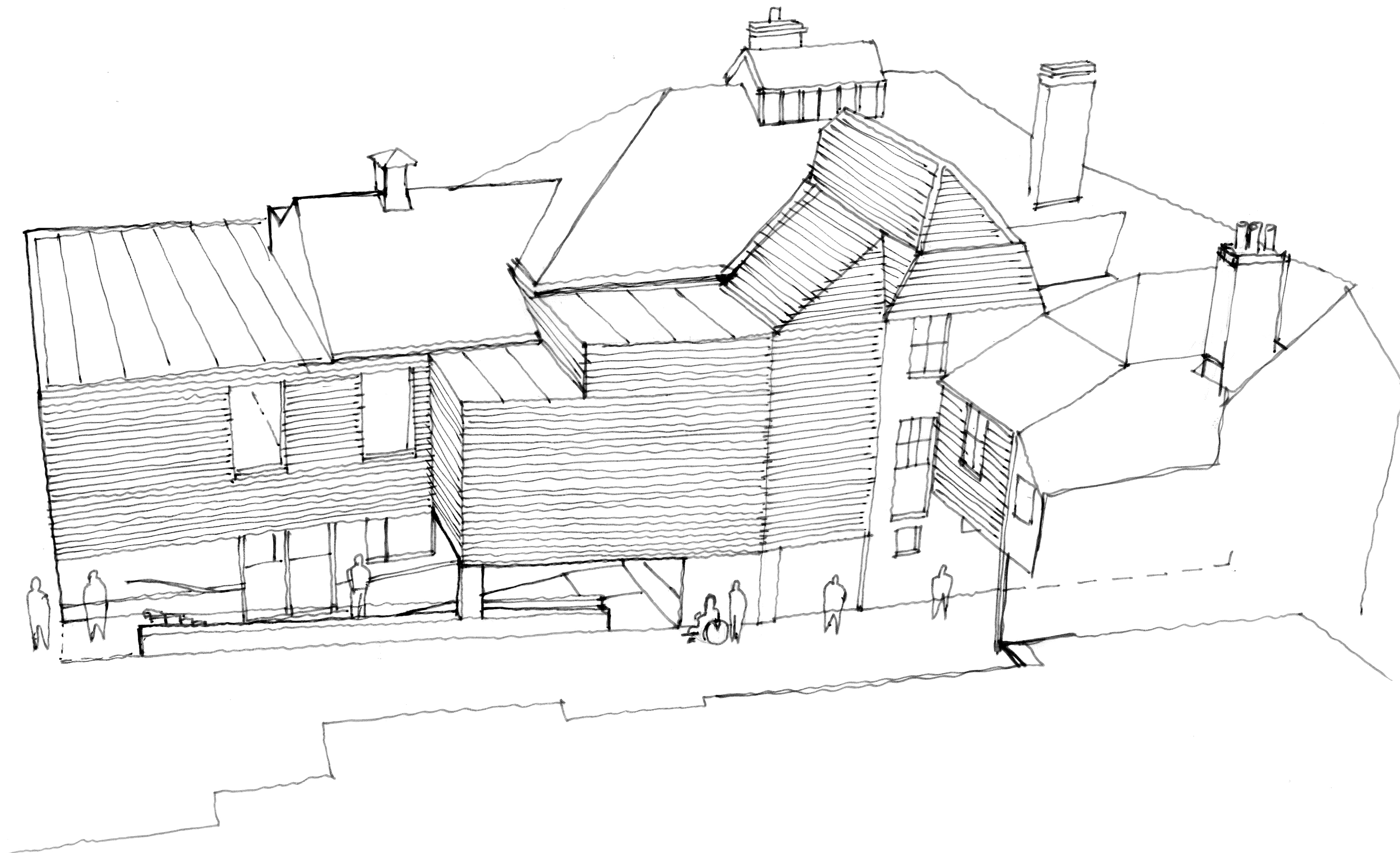
existing first floor assembly room



assembly room in theatre mode



existing rear of building



existing aerial view