

**THEIS
+KHAN**



**TENTERDEN
TOWN COUNCIL**

Tenterden Town Hall Project

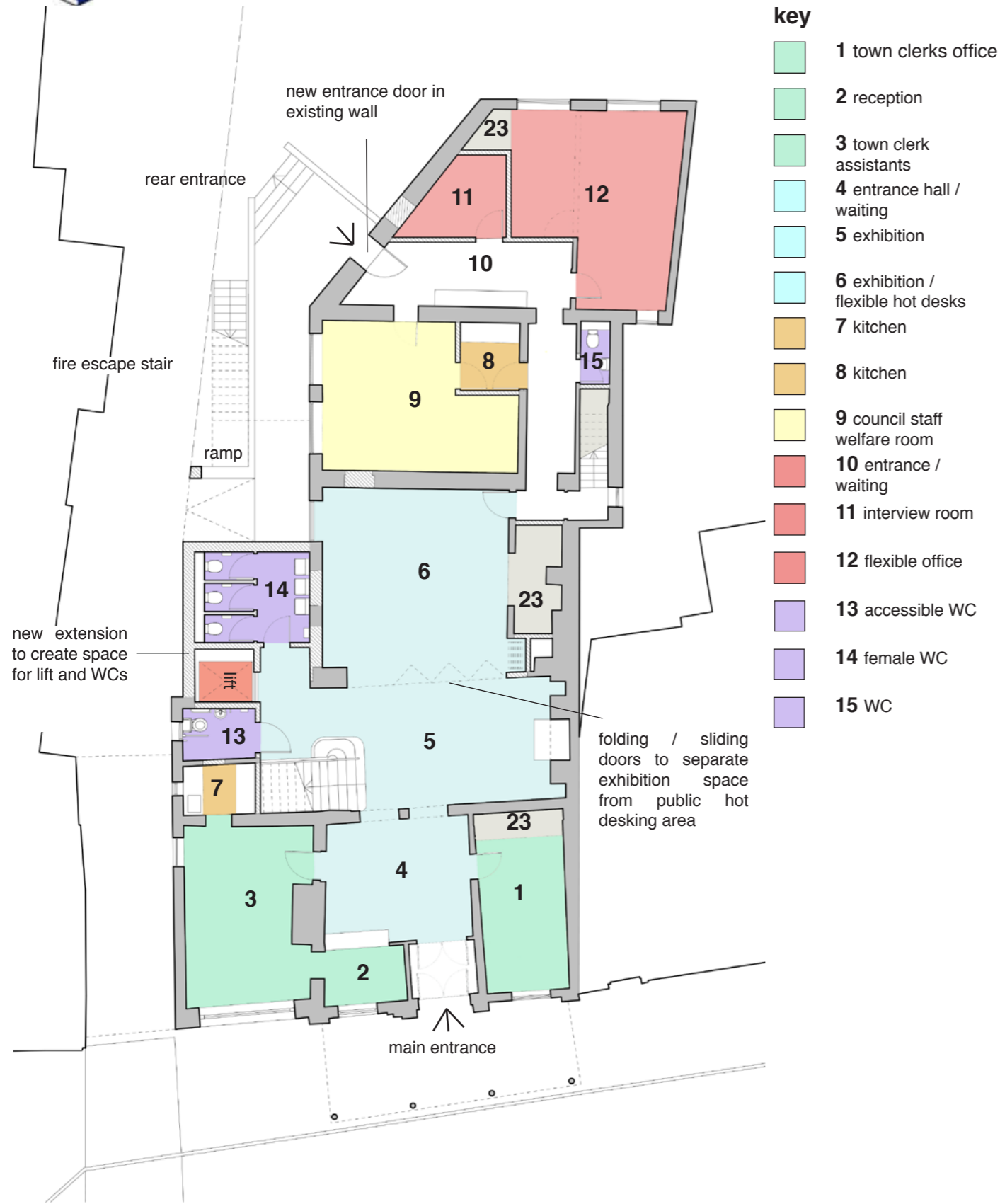
July 2019



Existing Ground floor plan



Existing First floor plan



Option A Ground floor plan



Option A First floor plan



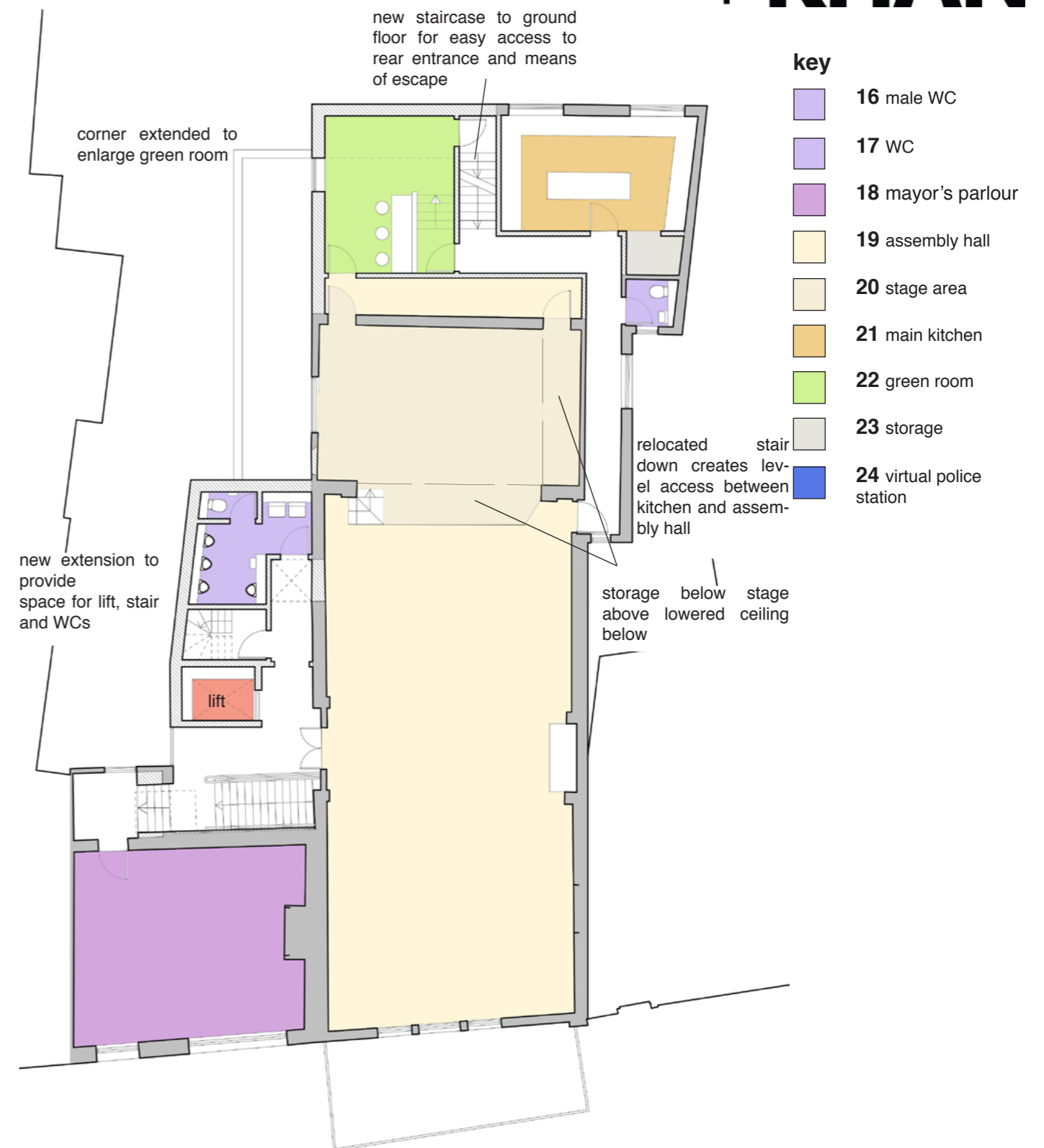
Option B Ground floor plan



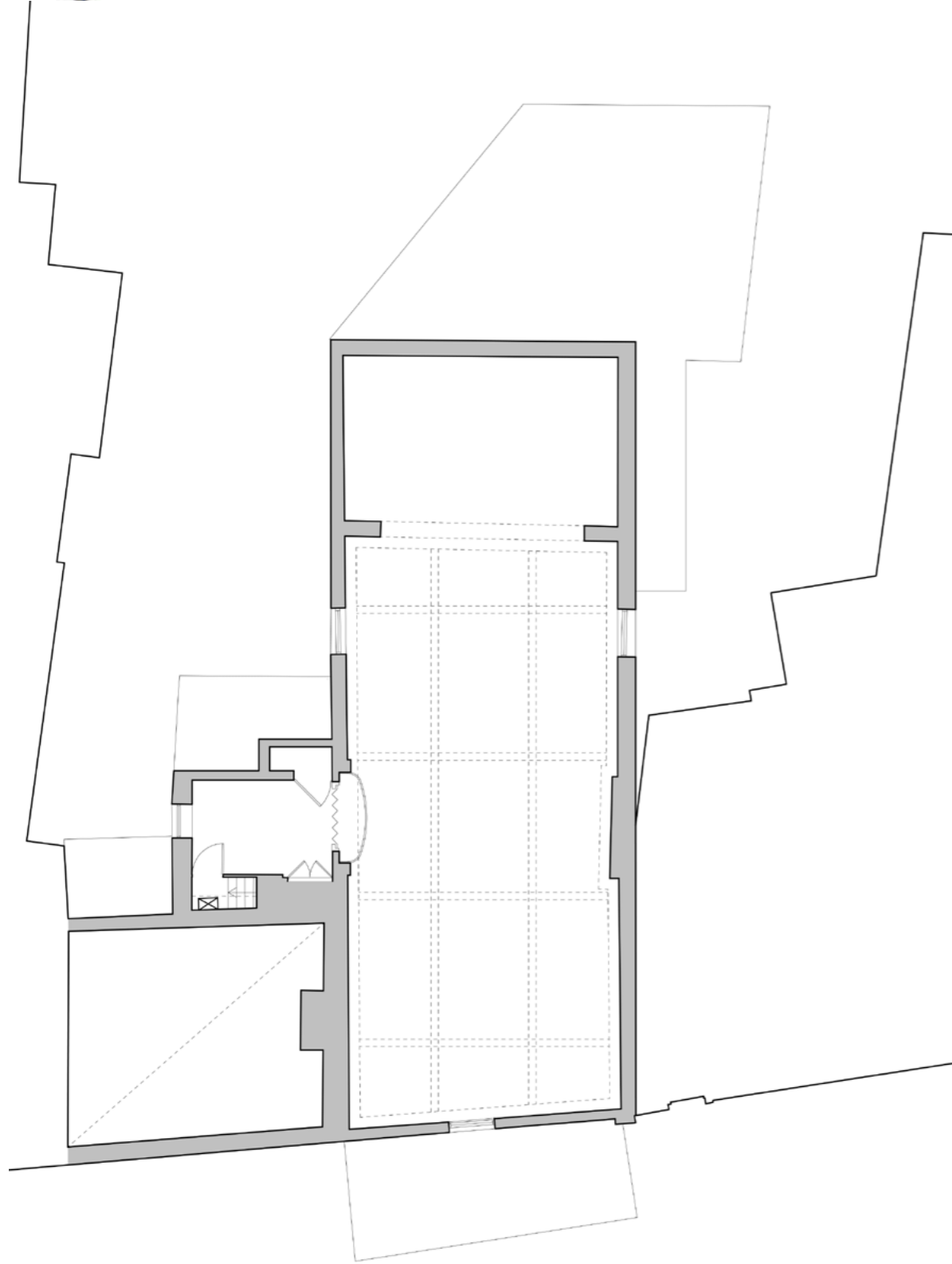
Option B First floor plan



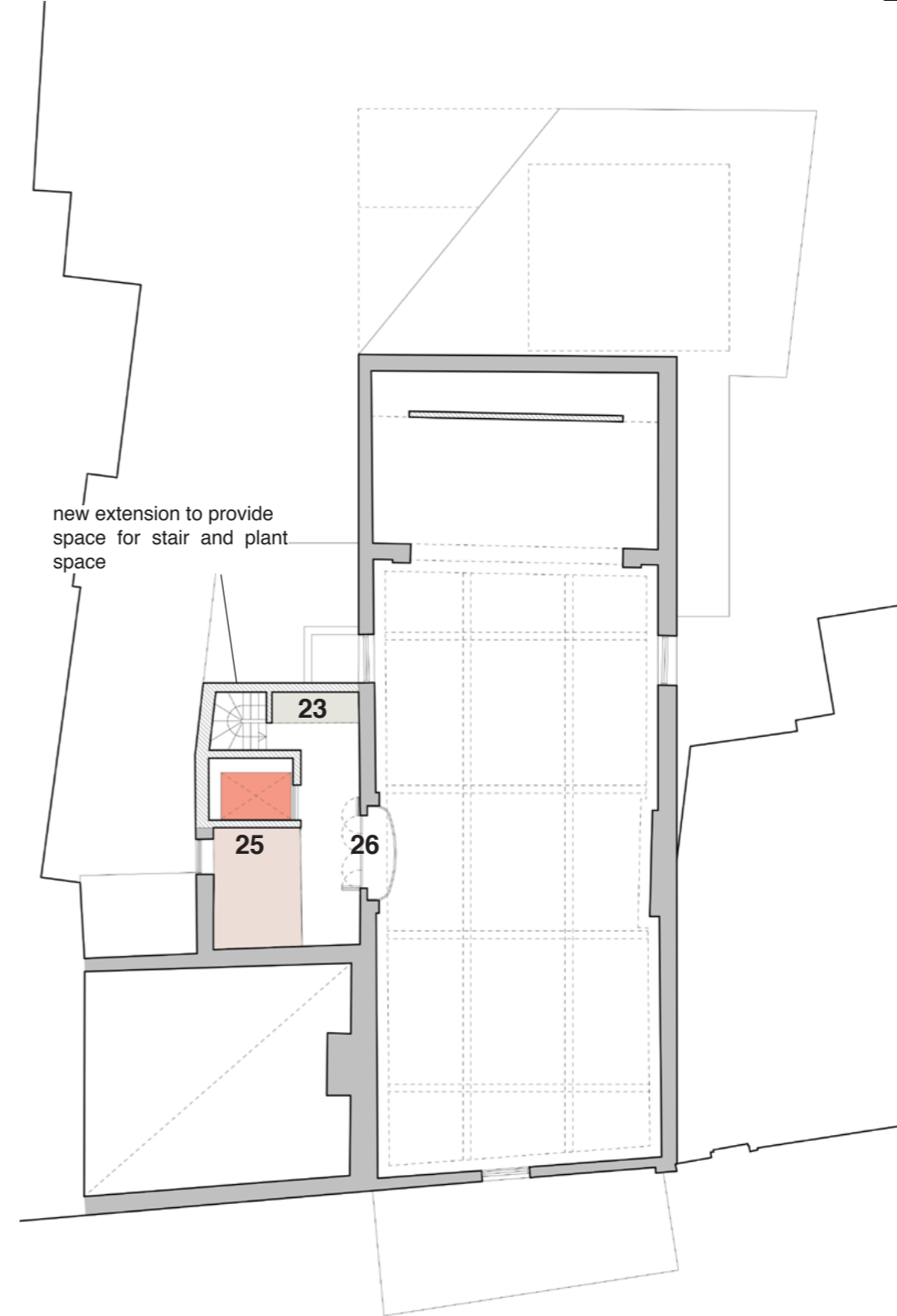
Option C Ground floor plan



Option C First floor plan



Existing Second floor plan

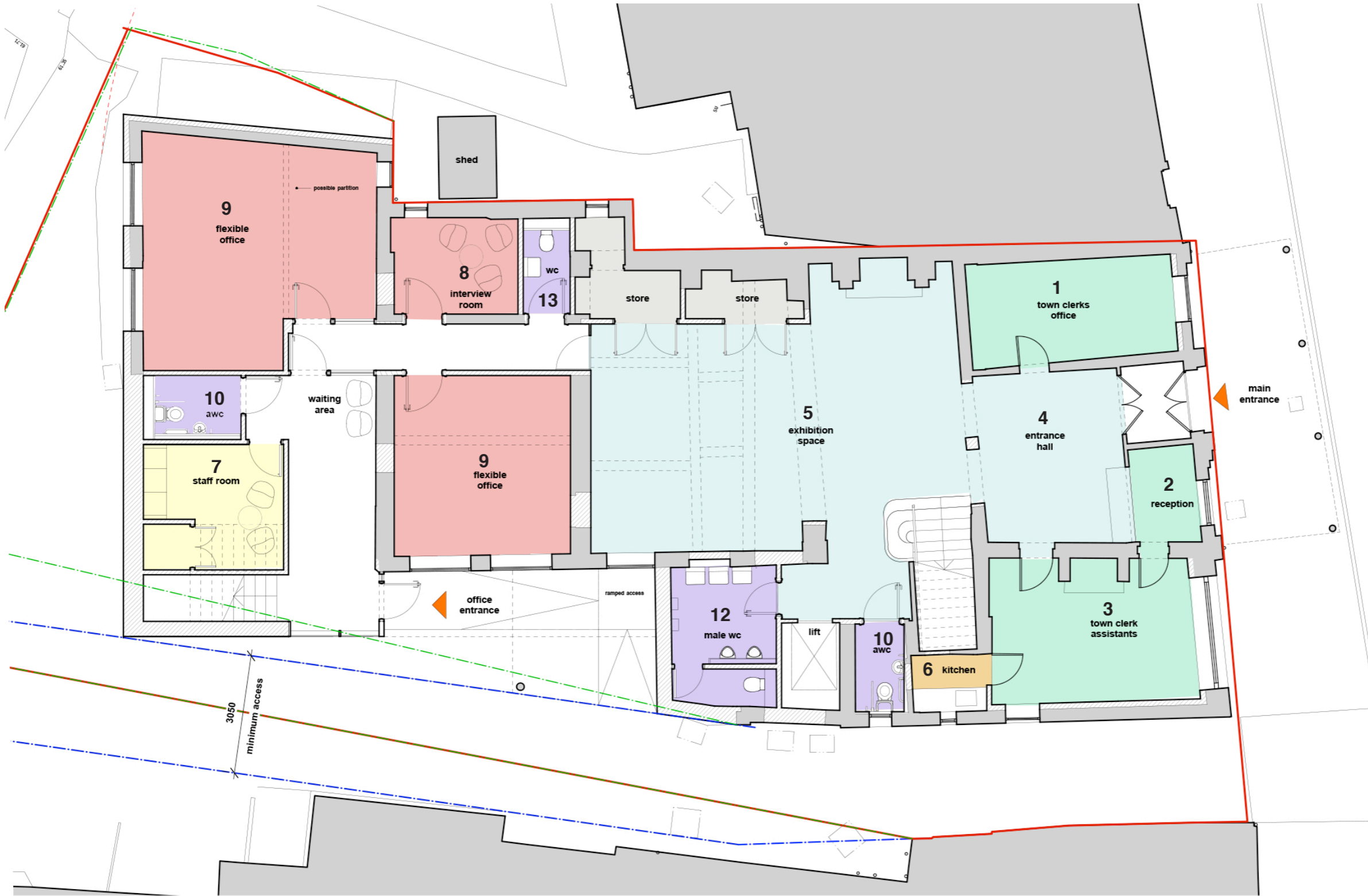


Options ABC Second floor plan

key

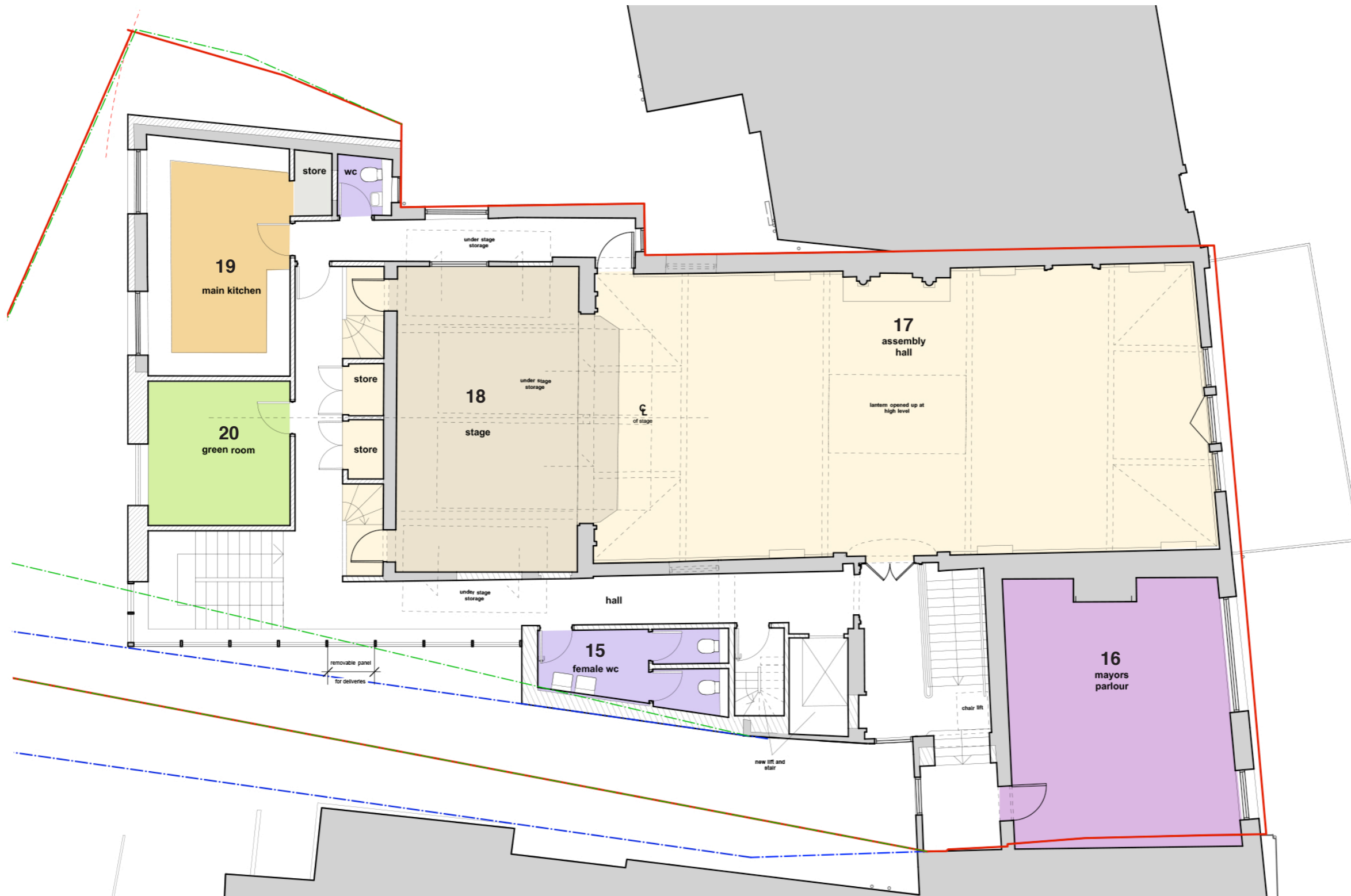
25 plant

26 minstrels' gallery




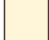
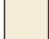






- key**
- 1 town clerks office
 - 2 reception
 - 3 town clerk assistants
 - 4 entrance hall / waiting
 - 5 exhibition
 - 6 kitchen
 - 7 council staff welfare room
 - 8 interview room
 - 9 flexible office space
 - 11 accessible WC
 - 12 male WC
 - 13 WC

ground floor plan



key

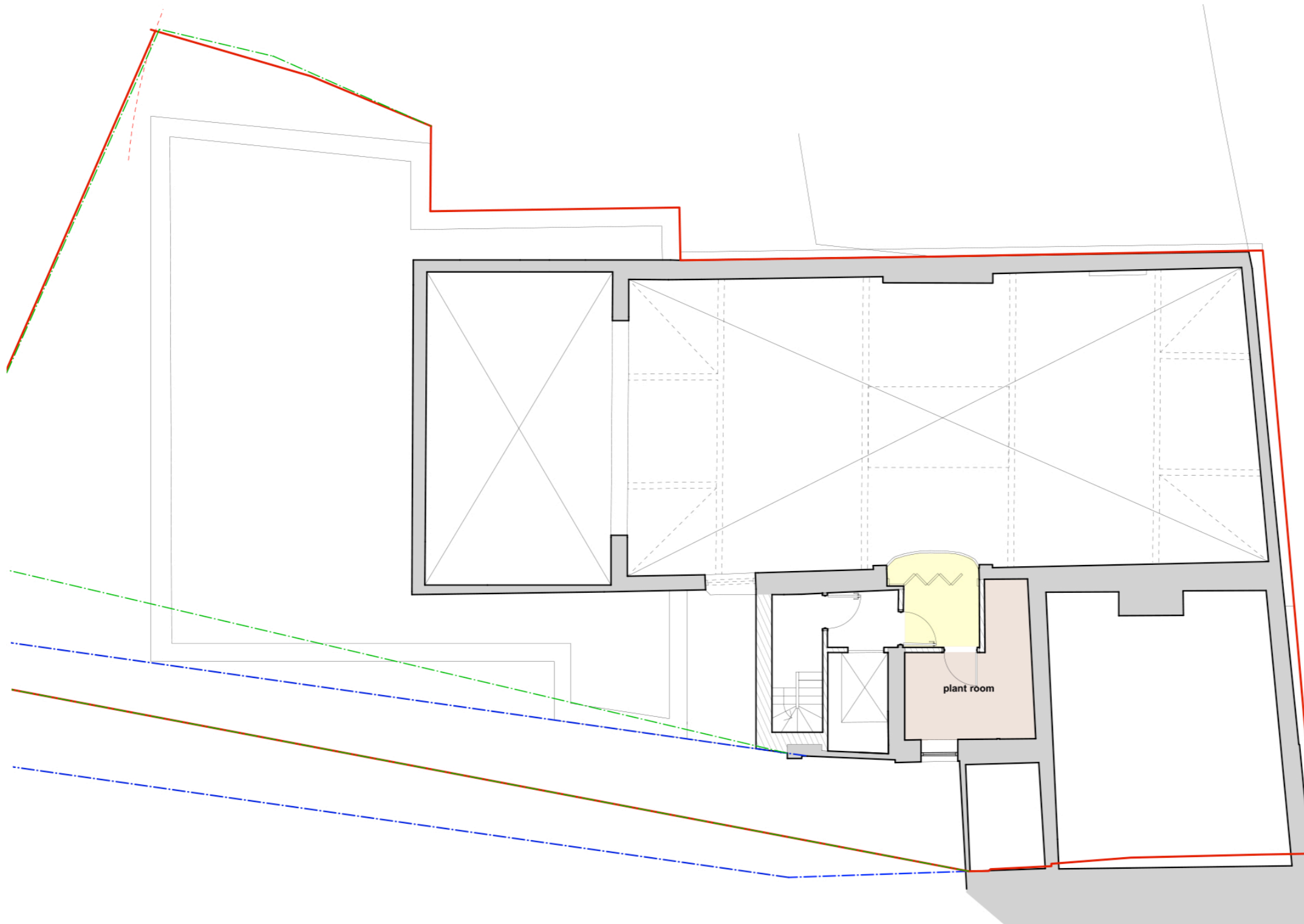
-  14 male WC
-  15 WC
-  16 mayor's parlour
-  17 assembly hall
-  18 stage area
-  19 main kitchen
-  20 green room
-  21 storage
-  22 virtual police station

first floor plan



key

- 25 plant
- 26 minstrels' gallery

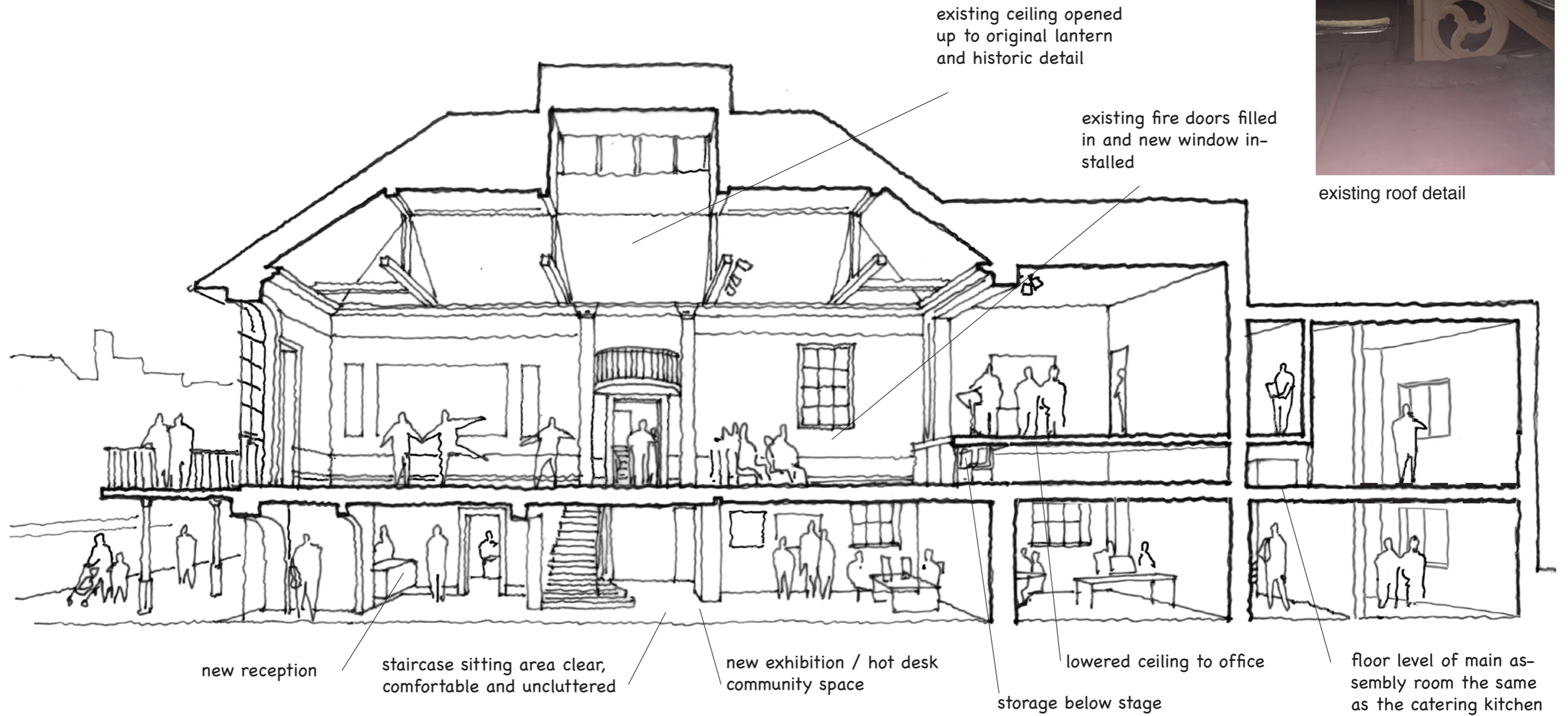


second floor plan



TENTERDEN
TOWN COUNCIL

**THEIS
+ KHAN**



Proposed Sketch section

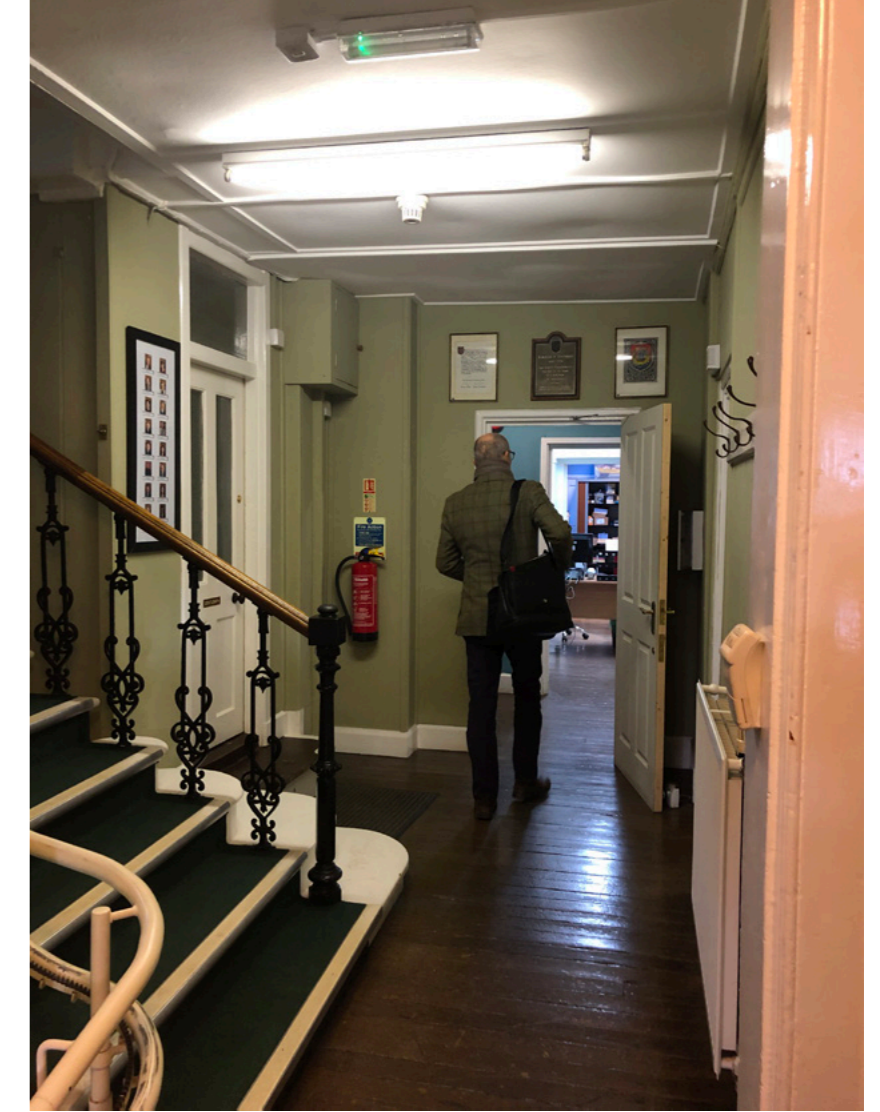


TENTERDEN
TOWN COUNCIL

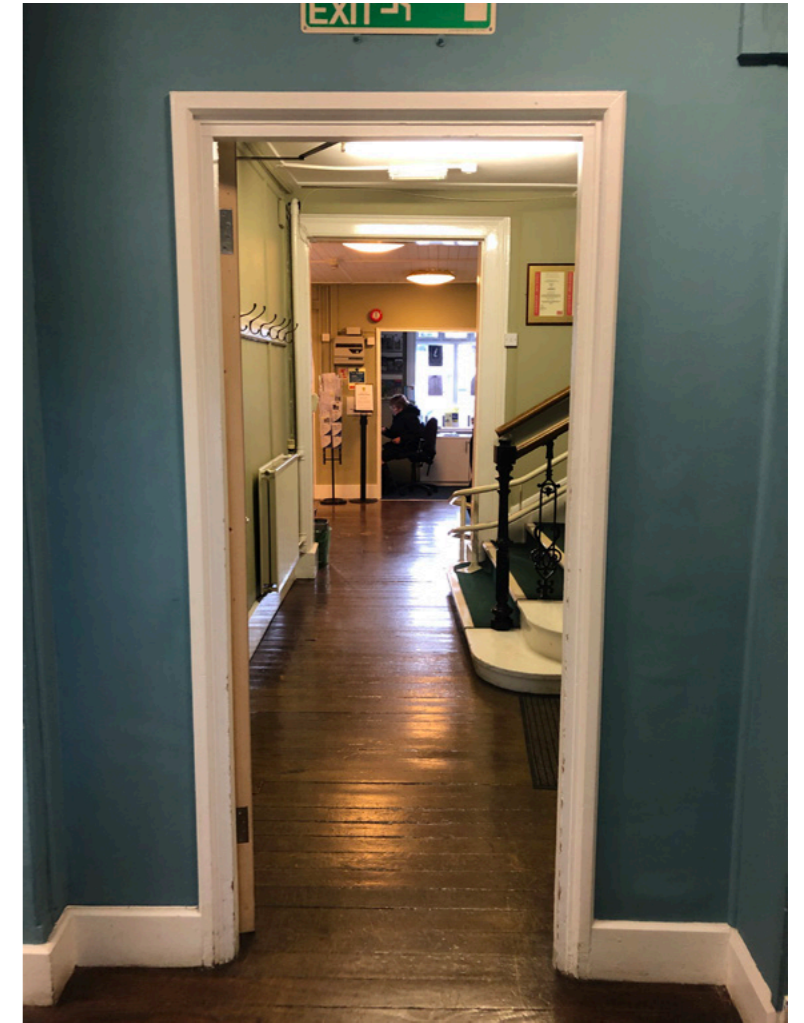
**THEIS
+KHAN**



main hall roof



view through to new exhibition space from main entrance

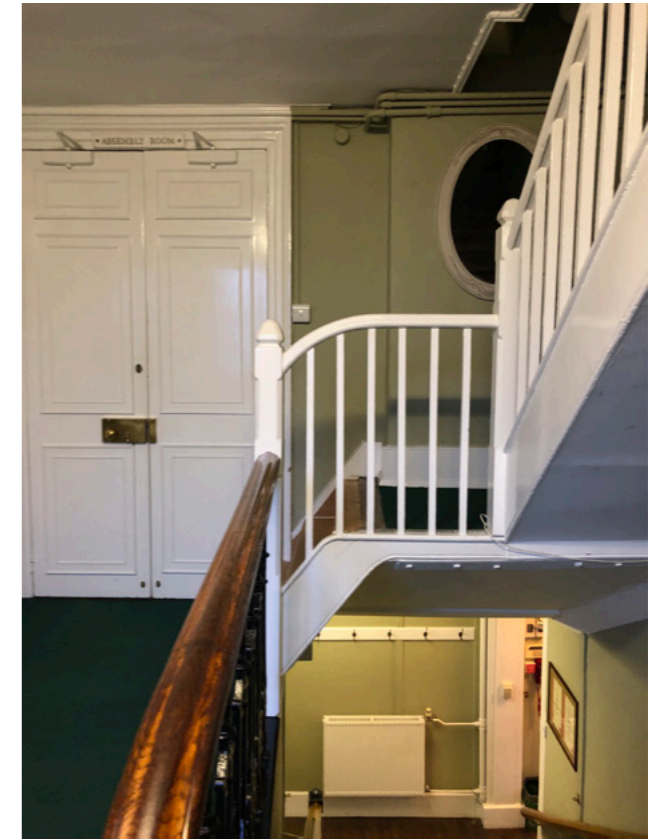
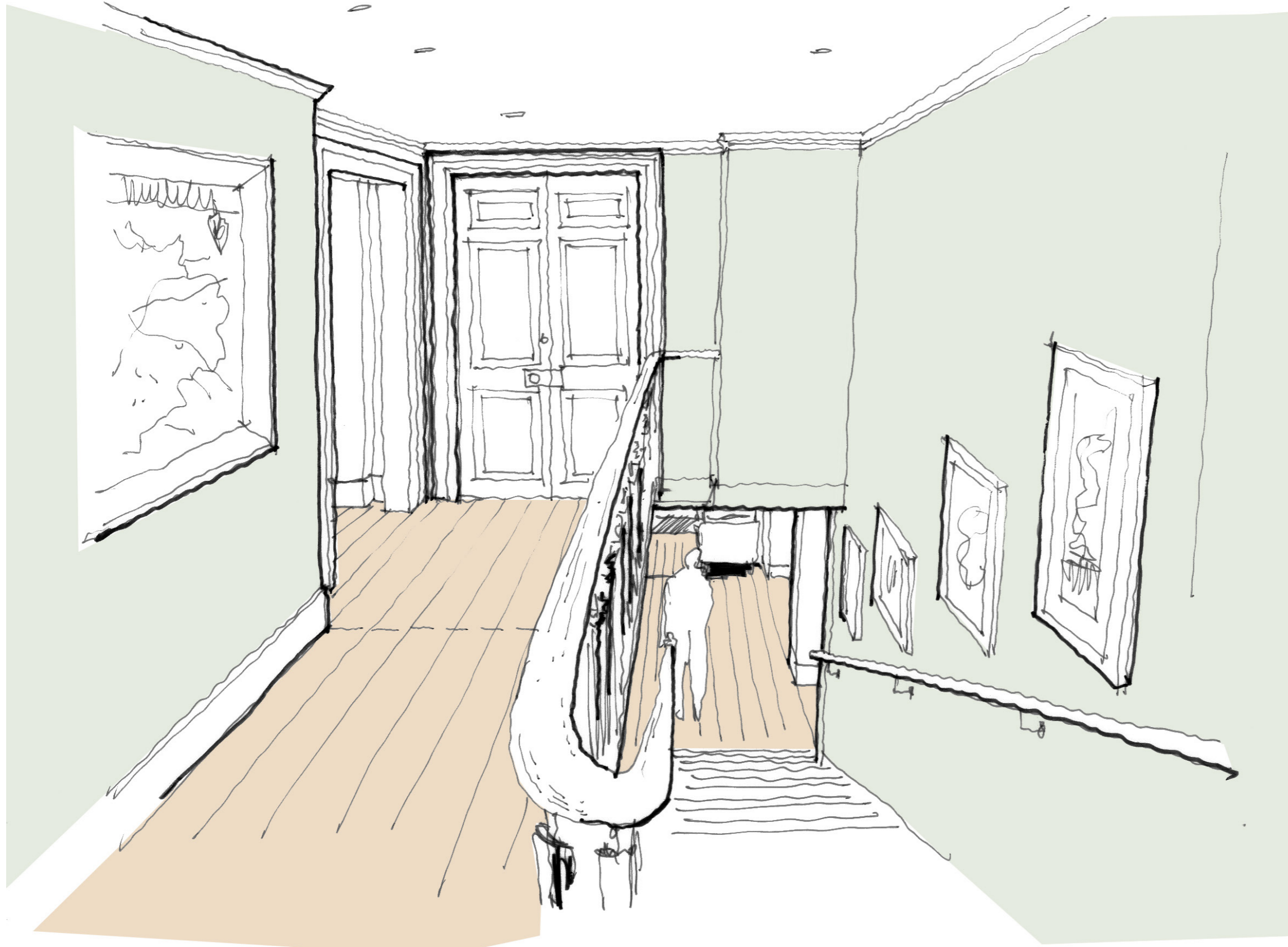


view to main entrance hall showing new fireplace opposite staircase



TENTERDEN
TOWN COUNCIL

**THEIS
+ KHAN**



view of first floor landing with second floor stair removed and view downstairs to exhibition area



TENTERDEN
TOWN COUNCIL

**THEIS
+ KHAN**



view showing new rear entrance in existing external wall with ramp



TENTERDEN
TOWN COUNCIL

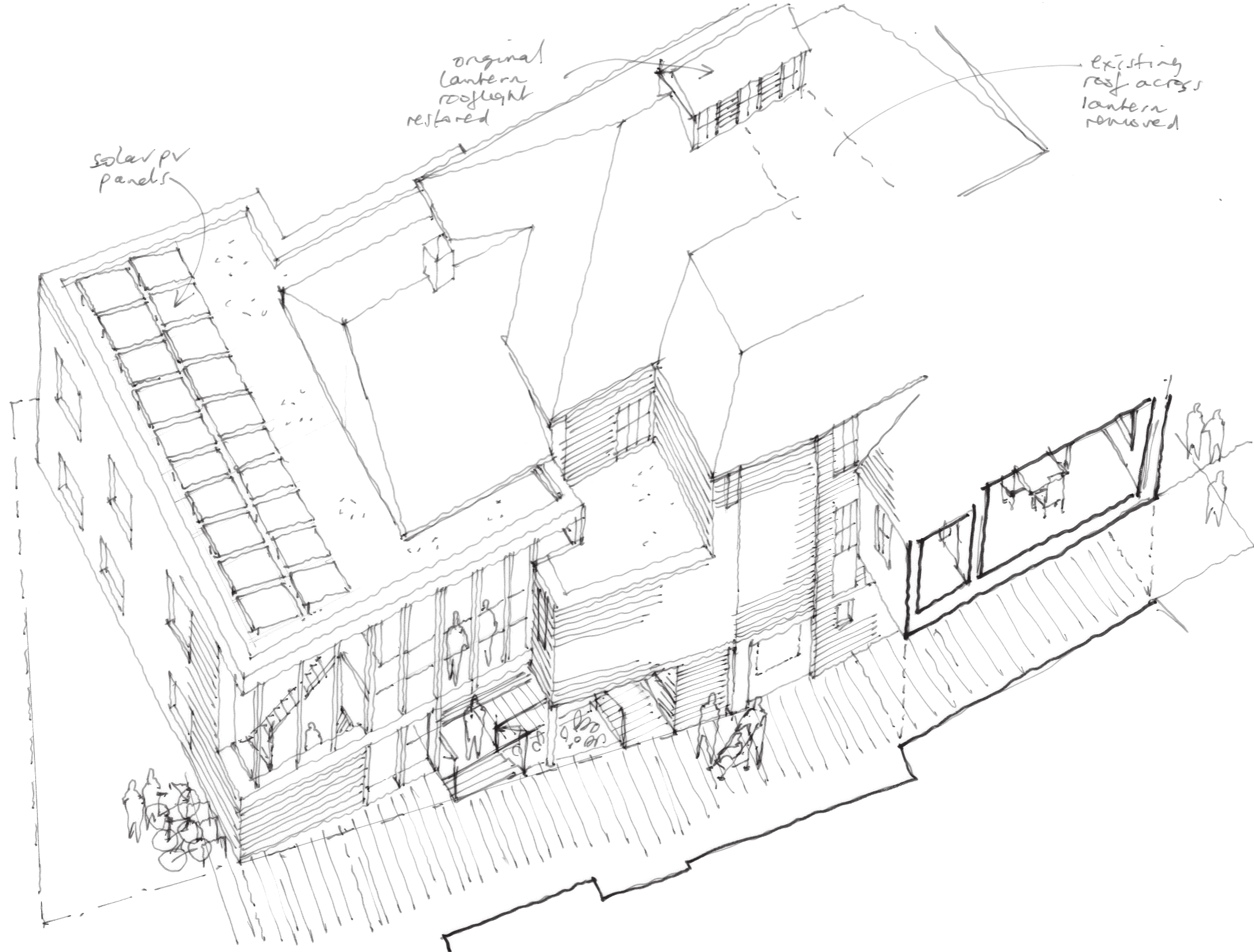
**THEIS
+ KHAN**

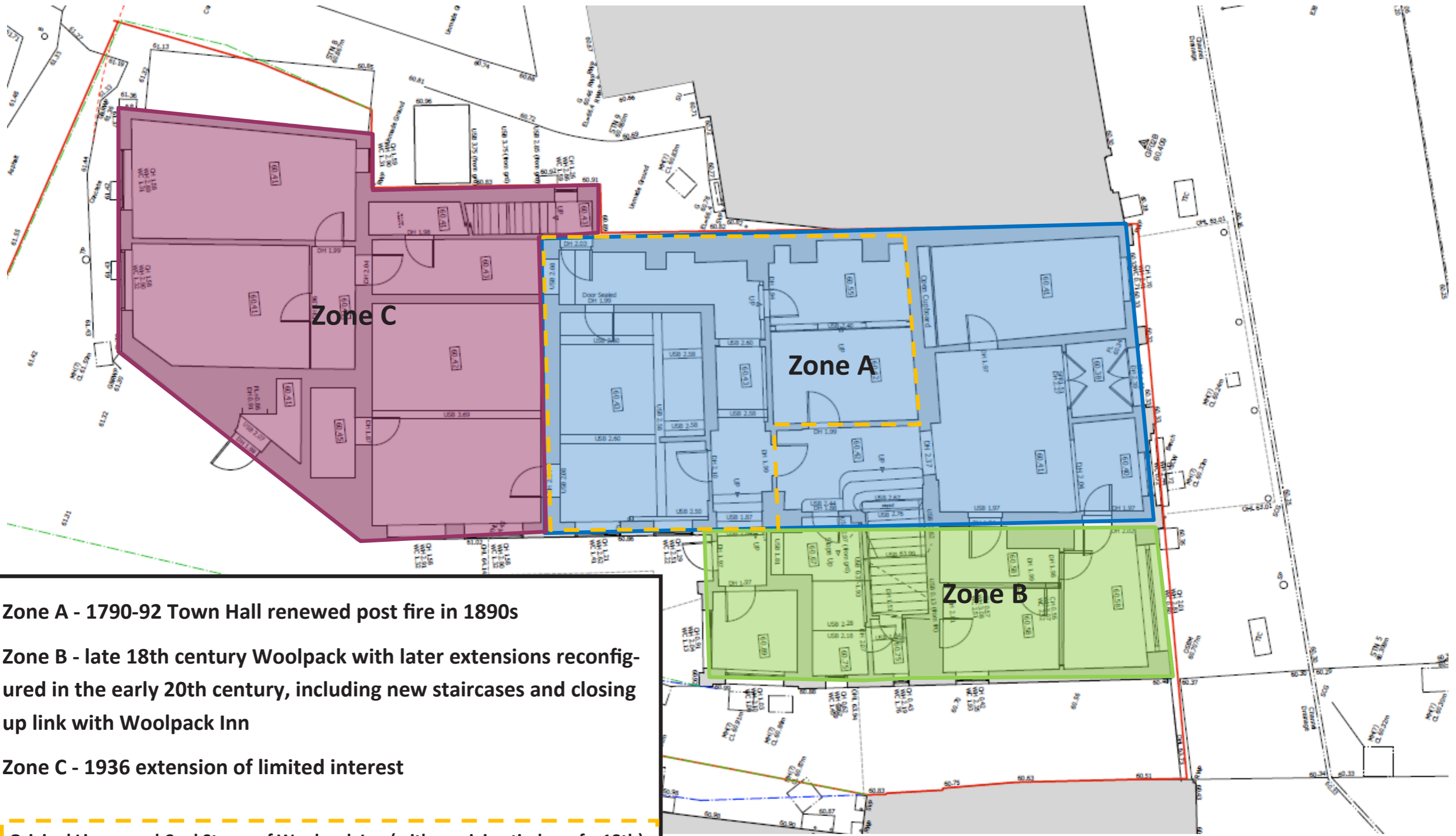




TENTERDEN
TOWN COUNCIL

THEIS
+ KHAN



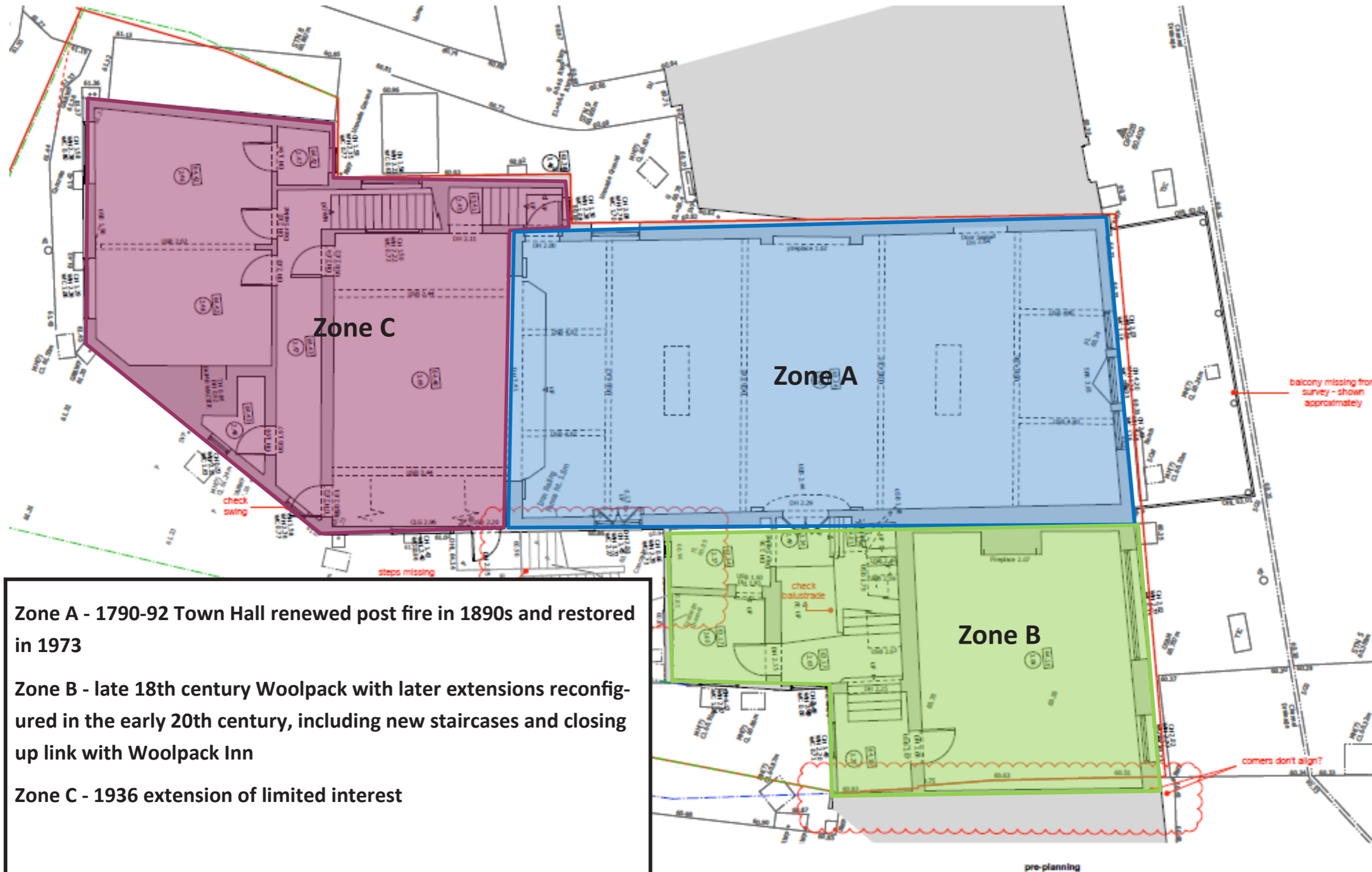


Zone A - 1790-92 Town Hall renewed post fire in 1890s

Zone B - late 18th century Woolpack with later extensions reconfigured in the early 20th century, including new staircases and closing up link with Woolpack Inn

Zone C - 1936 extension of limited interest

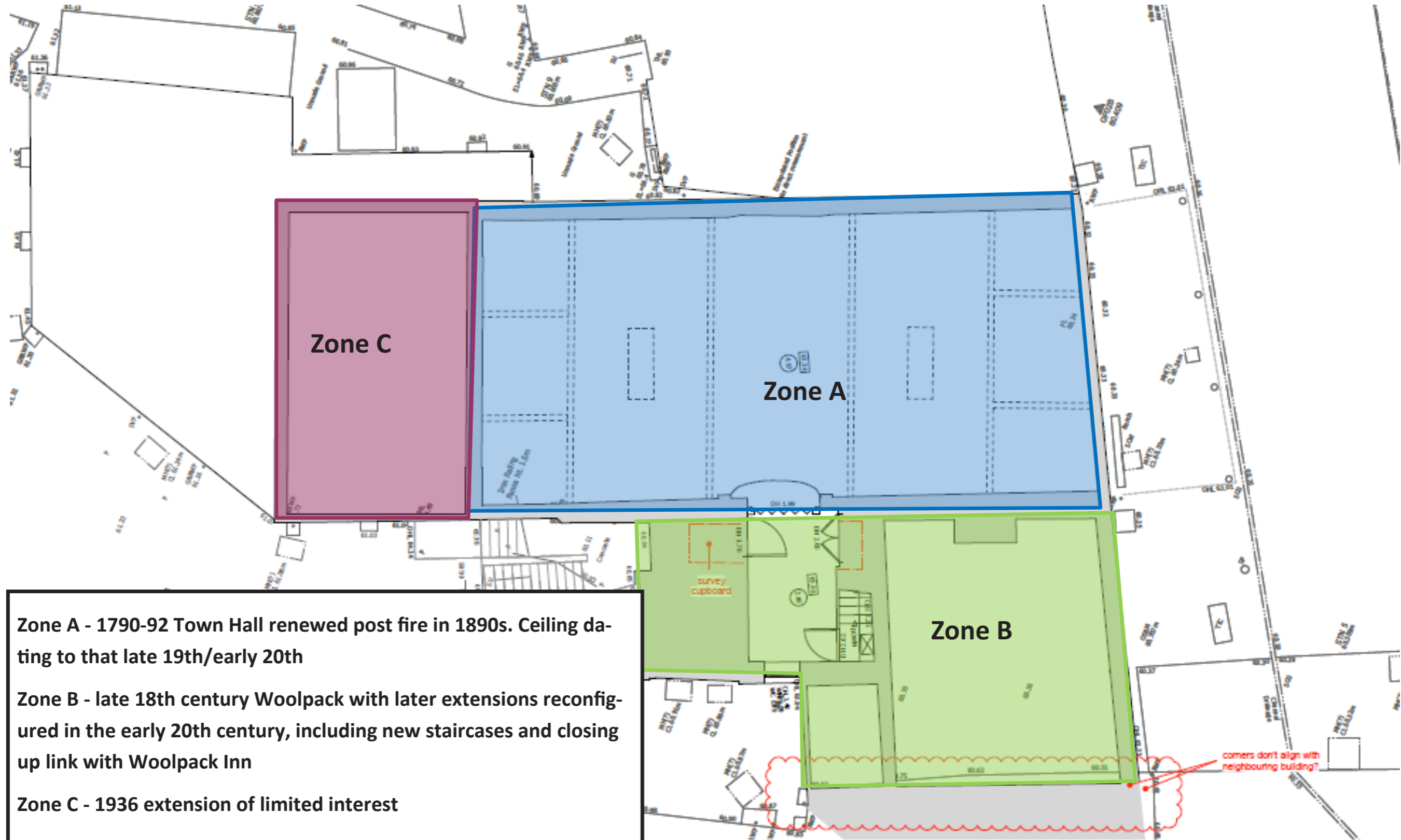
Original Liquor and Coal Stores of Woolpack Inn (with surviving timber of c.18th)



Zone A - 1790-92 Town Hall renewed post fire in 1890s and restored in 1973

Zone B - late 18th century Woolpack with later extensions reconfigured in the early 20th century, including new staircases and closing up link with Woolpack Inn

Zone C - 1936 extension of limited interest



Zone A - 1790-92 Town Hall renewed post fire in 1890s. Ceiling dating to that late 19th/early 20th

Zone B - late 18th century Woolpack with later extensions reconfigured in the early 20th century, including new staircases and closing up link with Woolpack Inn

Zone C - 1936 extension of limited interest

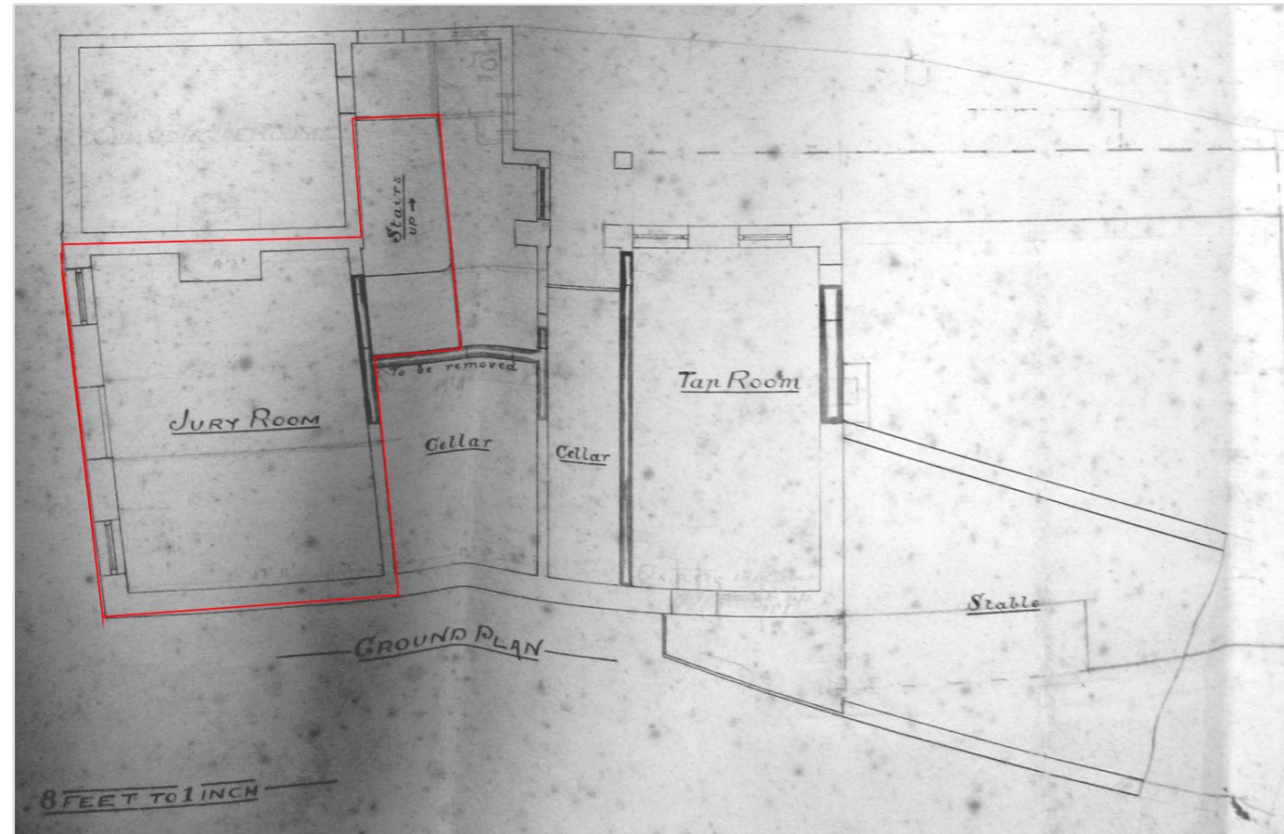


Figure 3. Existing Groundplan, 23rd May 1901

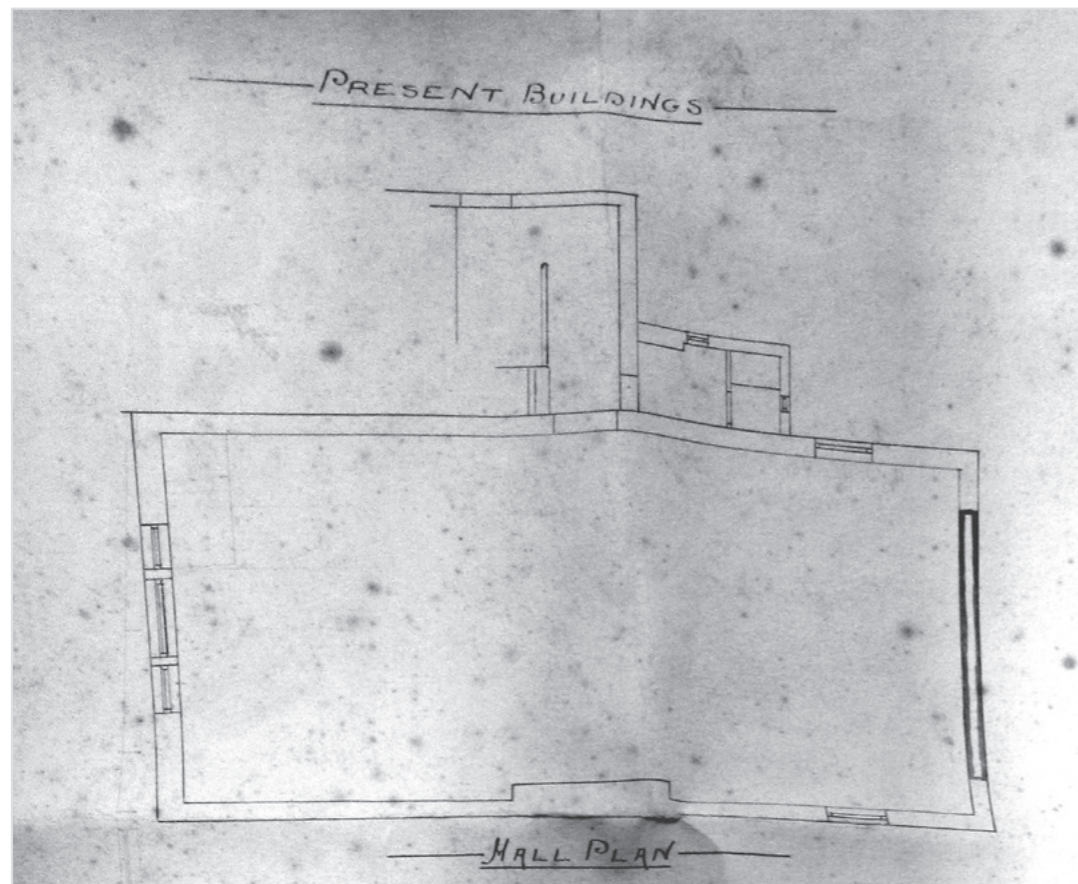


Figure 4. Existing First Floor, 23rd May 1901



Figure 5. The Town Hall frontage in the early 1900s (pre-1912)

1912 Although plans for a new entrance and balcony had first been proposed in 1880, it was not until 1912 that the balcony was finally added to the front of the building.¹¹ The front window was replaced by a new window with central doors leading onto the balcony (Figure 6).



Figure 6. Undated postcard, date range: 1912-1925

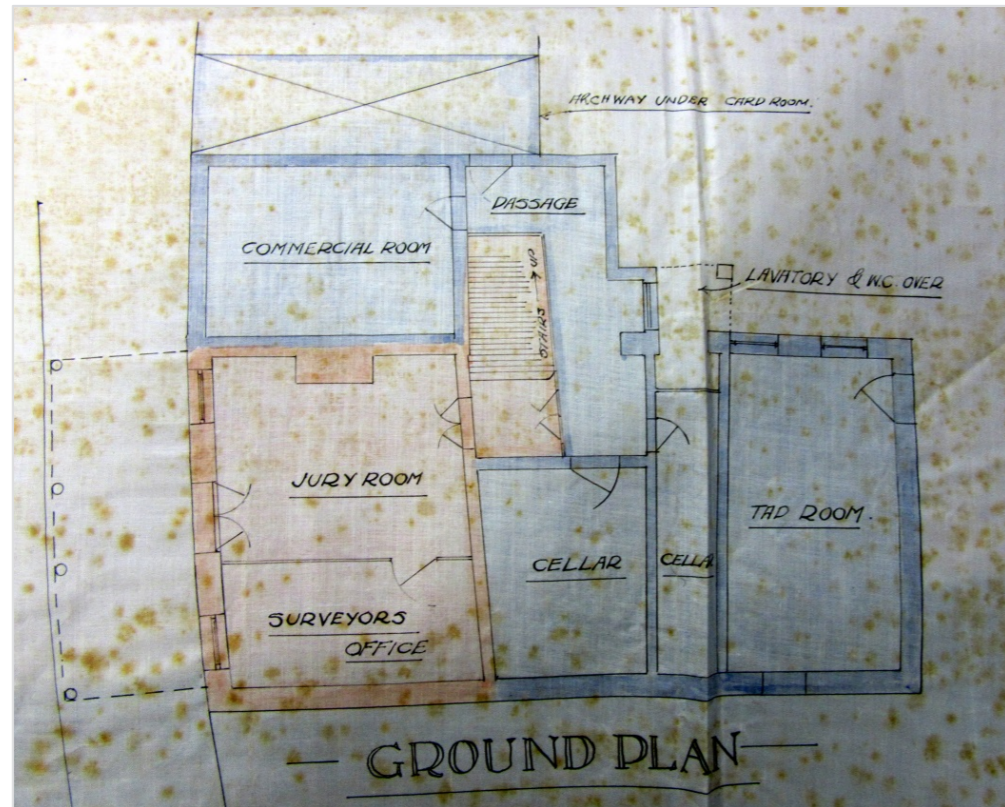


Figure 7. Groundplan, 1920¹²

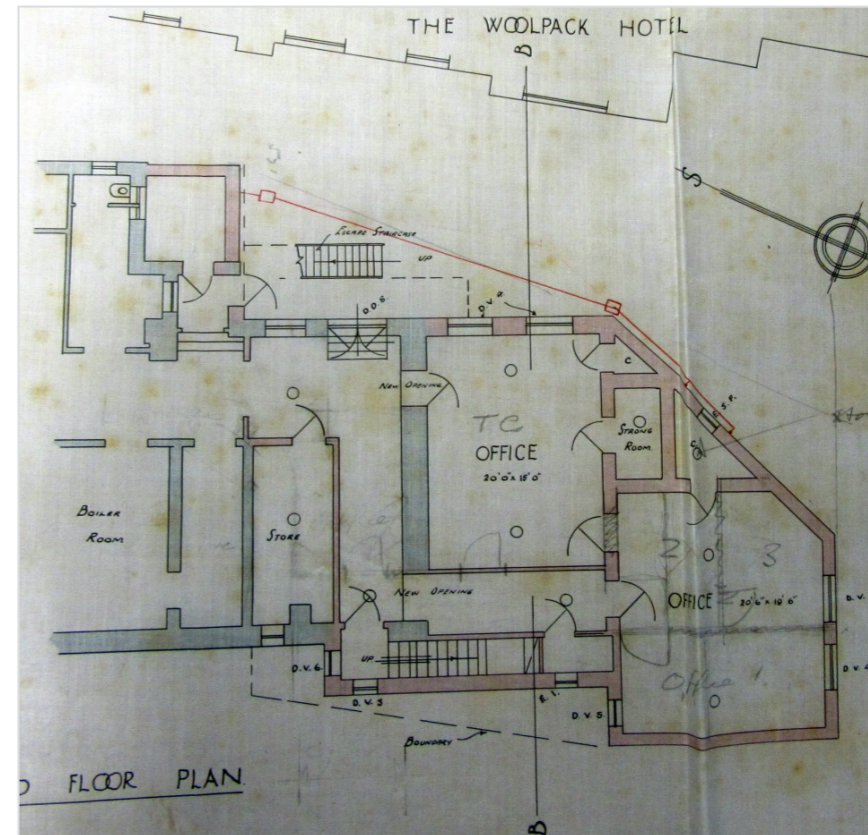


Figure 12. Ground Floor, 1936¹⁷

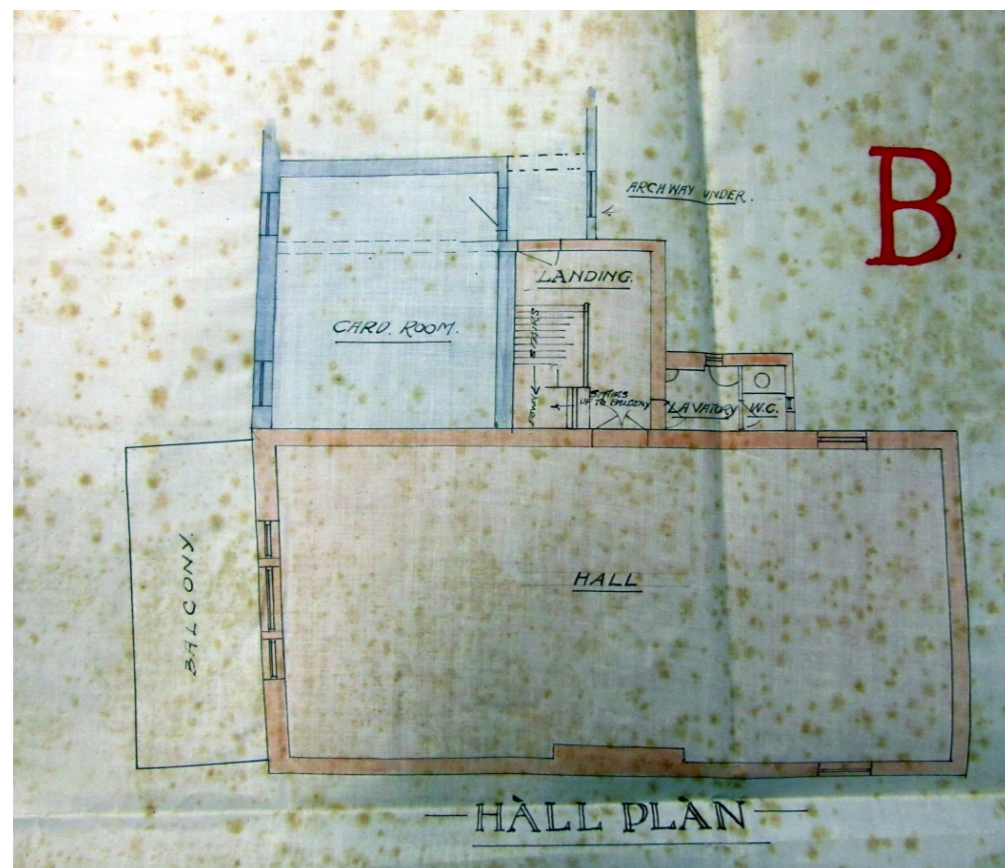


Figure 8. First Floor, 1920

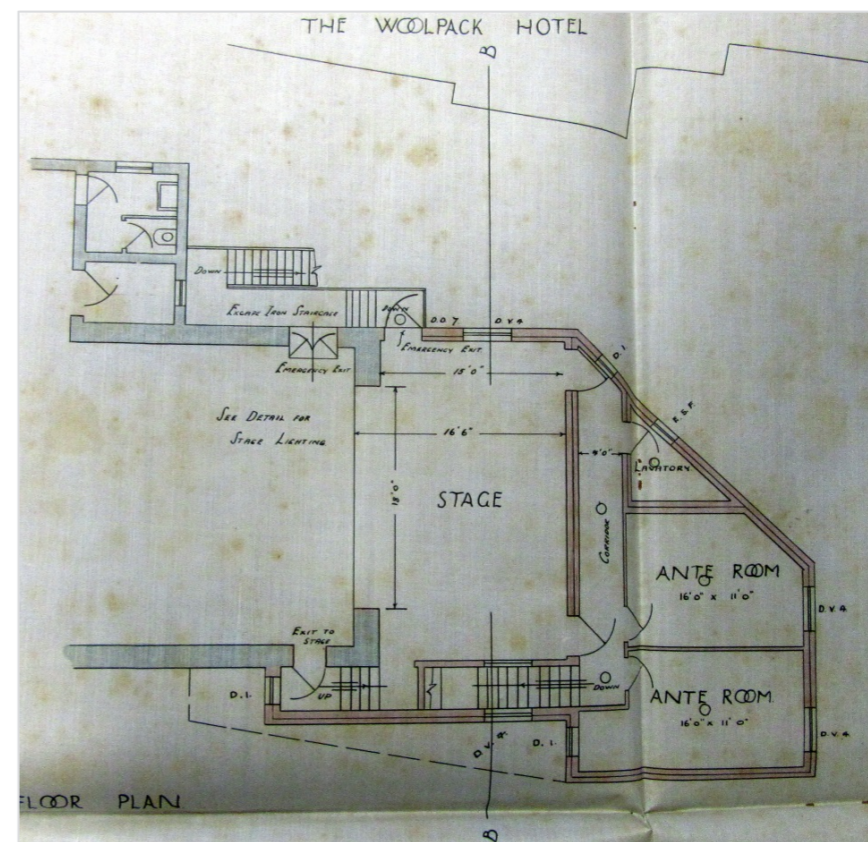


Figure 13. First Floor, 1936



1995 August. Proposed development/alteration plans archived in the Tenterden Town Hall Strong Room show the following layout (existing)²⁰:

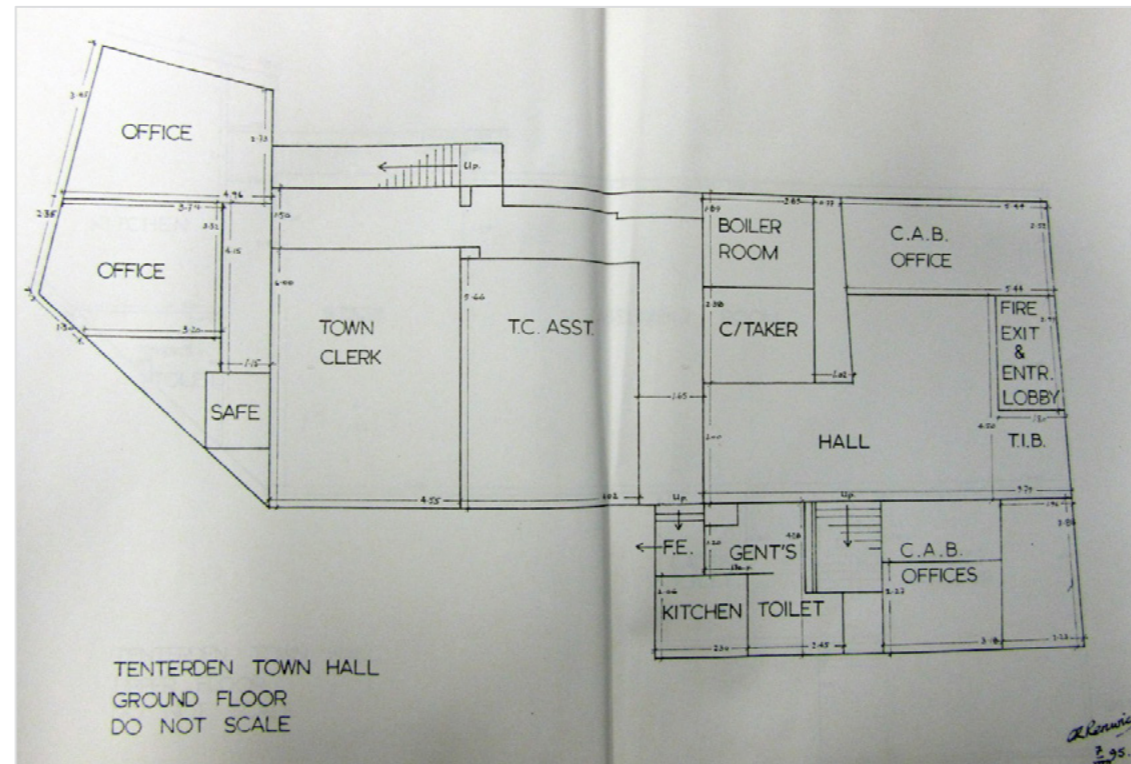


Figure 16. Ground Floor, 1995.

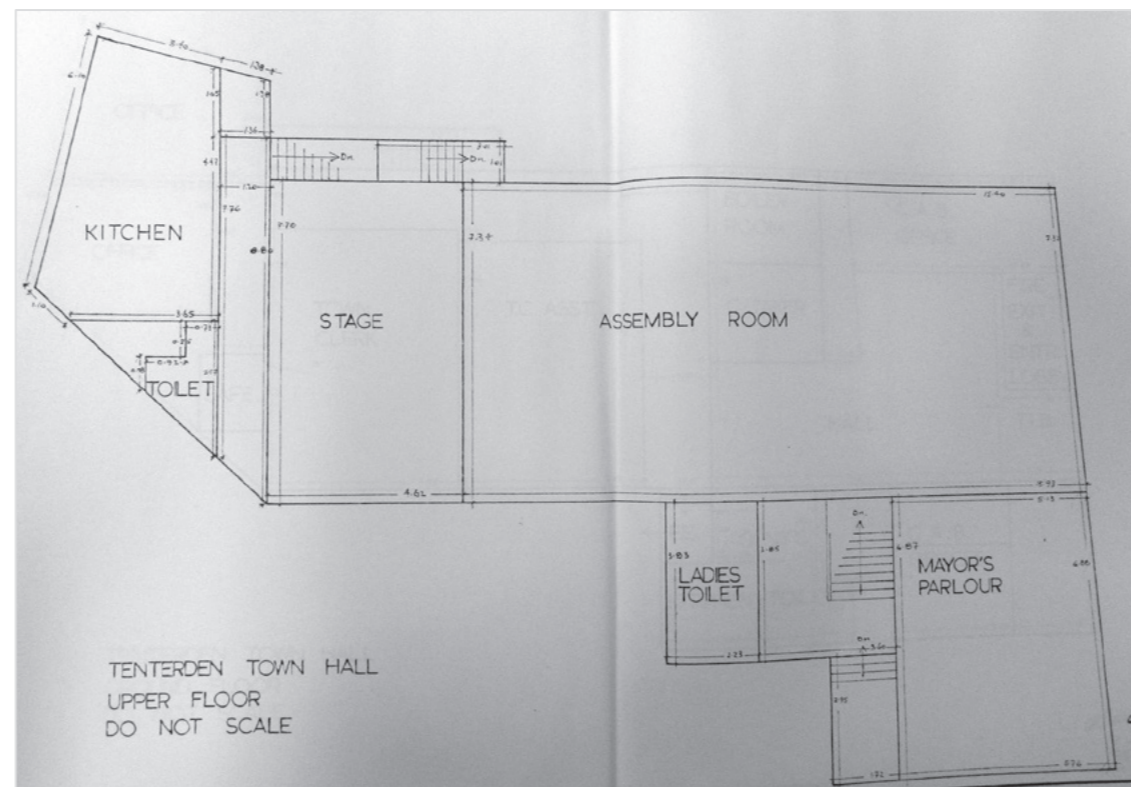


Figure 17. First Floor, 1995