



Tenterden Town Council

ANNUAL TOWN MEETING

Monday, 24th June 2019



MEETING THE CHALLENGES



KEY OBJECTIVES

- **Protecting the town from speculative housing developments**
- **Promoting Tenterden as a great place to live, work and visit**
- **Spending our money wisely**
- **Tackling anti-social behaviour**
- **Delivering four major projects: Recreation Ground, Town Hall, Cinema and Halls for hire.**



PROTECTING THE TOWN FROM SPECULATIVE HOUSING DEVELOPMENTS

Full council support
and preliminary
funding for ‘**Keeping
Tenterden Green**’
Campaign





PROTECTING THE TOWN FROM SPECULATIVE HOUSING DEVELOPMENTS

Ashford Borough Council Local Plan to 2030

- Successful input to Ashford Borough Council's Local Plan
- Local plan adopted in February 2019



PROTECTING THE TOWN FROM SPECULATIVE HOUSING DEVELOPMENTS

Neighbourhood Plan Focusing on Local Green Space

- Why -** Ashford Plan does not cover designation of local green spaces which are considered necessary for Tenterden
- What -** To produce a Neighbourhood Plan for designating Local Green Spaces which defines a coherent and forward looking plan for Tenterden. It must complement and conform with Ashford local plan policies

It will:

“establish a network of valuable green spaces with interconnecting green passages (where possible) to promote the health and wellbeing of its residents, indigenous wildlife and continue to attract visitors to the town.”



PROTECTING THE TOWN FROM SPECULATIVE HOUSING DEVELOPMENTS

Neighbourhood Plan Timeline

- December – Council voted to produce plan
- March – backed by Ashford Borough Council
- April – residents and councilors form Steering Committee
- May – Neighbourhood Plan public launch
- May – setting up working groups
- June – Training of committee members



PROTECTING THE TOWN FROM SPECULATIVE HOUSING DEVELOPMENTS

Neighbourhood Plan Next Steps

- Working with planning consultant
- Working with Ashford Borough Council's planning unit
- Evidence collection for:
 - ❖ Beauty
 - ❖ Recreational value
 - ❖ Tranquility
 - ❖ Wildlife
 - ❖ Historic significance
- Funding from Tenterden Town Council and central government



PROMOTING TENTERDEN AS A GREAT PLACE TO LIVE, WORK AND VISIT

- New Town Centre Manager appointment to implement the Tenterden Destination Management Plan.
- Financial support and office assistance for events including...
 - ❖ Christmas Market
 - ❖ May Fayre
 - ❖ Folk Festival
 - ❖ Spirit of Tenterden
 - ❖ Tributes in the Park
 - ❖ St Michaels Annual 5k/10k run



PROMOTING TENTERDEN AS A GREAT PLACE TO LIVE, WORK AND VISIT

- Community Chest £165,000 to help fund projects for these organisations:
 - ❖ Boxing club
 - ❖ Tenterden Primary
 - ❖ Tenterden *and* Smallhythe *Cricket clubs*
 - ❖ Tenterden & District Museum
 - ❖ The Tuesdays
 - ❖ The Youth Club at Highbury Hall
 - ❖ Tenterden Social Hub
 - ❖ St Michaels Village Hall
 - ❖ St Michaels & All Angels Church
 - ❖ Tenterden Scouts



PROMOTING TENTERDEN AS A GREAT PLACE TO LIVE, WORK AND VISIT

- The role of our Maintenance Team:
 - ❖ Looking after the Town's greens (previously delivered by ABC & KCC).
 - ❖ Keeping Tenterden & St. Michaels Recreation Grounds clean, safe and looking great.
 - ❖ Maintenance of Town Council property: Town Hall, Pavilion and three sets of public toilets.



PROMOTING TENTERDEN AS A GREAT PLACE TO LIVE, WORK AND VISIT

- Lobbying KCC to maintain local bus services
- 'Green' initiatives - Kiln Field, Coombe Lane Cemetery



SPENDING OUR MONEY WISELY

- Current annual precept (budget) - £571,964
- Equates to £2.50 per week for the average household
- Significant extra demand on financial resources, for example:
 - ❖ Selective Neighbourhood Plan
 - ❖ Professional fees
 - ❖ Increased Staffing
 - ❖ Town Manager
 - ❖ Youth Worker
 - ❖ IT equipment
 - ❖ Continuing to maintain three sets of Public toilets
 - ❖ Increasing reserves to put towards projects

Total cost: £196,000.



SPENDING OUR MONEY WISELY

Why aren't these additional costings covered by the £3.5 million?

The council has three types of income:

- Developer contributions (sometimes referred to as Section 106)
- Capital income (the £3.5 million)
- Revenue income for day-to-day expenses.



TACKLING ANTI-SOCIAL BEHAVIOUR

- Newly-formed Tenterden Police Forum
 - ❖ Members: Kent Police, Tenterden Town Council, Kent County Council and Ashford Borough Council
- New state-of-the-art public space cameras
- New Neighbourhood Watch Scheme for St Michael's



DELIVERING OUR FOUR MAIN PROJECTS



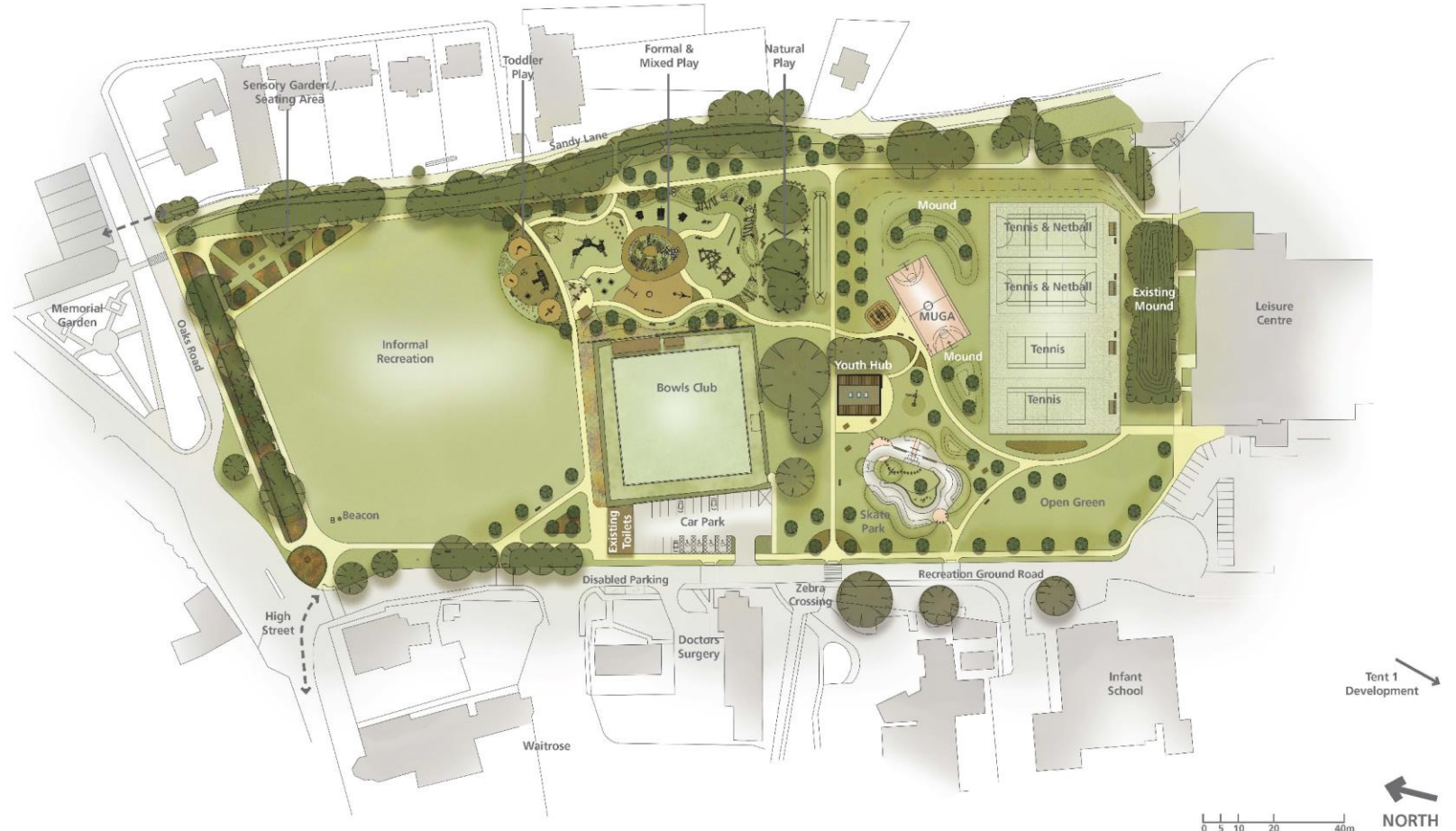
OUR FOUR MAJOR PROJECTS

Tenterden Recreation Ground Landscape Masterplan



Recreation Ground

New skate park, youth hub, tennis and netball courts will be the first elements to be delivered from next Spring. Public exhibition and consultation on costs scheduled for September. Indicative cost of project: up to £1.5m for the main phase. Please note the Bowls Club will remain in its current location.





OUR FOUR MAJOR PROJECTS

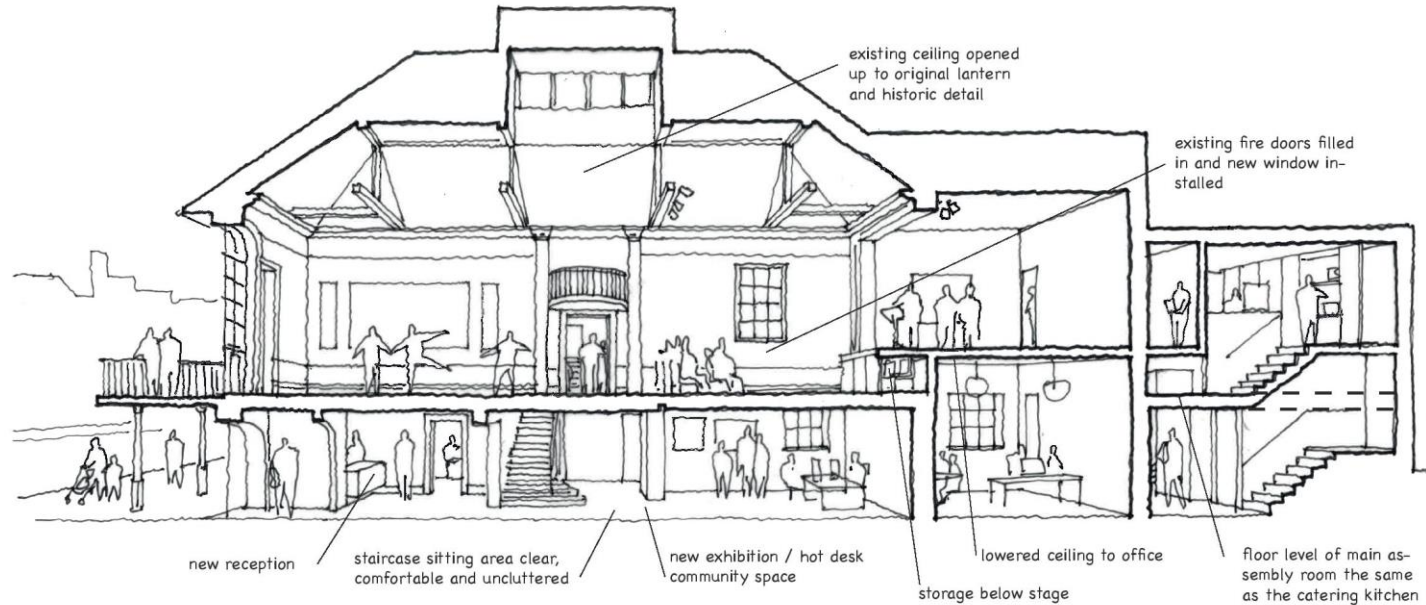
Town Hall

Architects have been appointed to redesign the Town Hall. Public meeting to discuss plans scheduled for Tuesday, 6 July. Long-overdue repairs, such as the leaking roof, will be included. Council contribution: £750,000 plus income from grants.



TENTERDEN
TOWN COUNCIL

THEIS
+KHAN



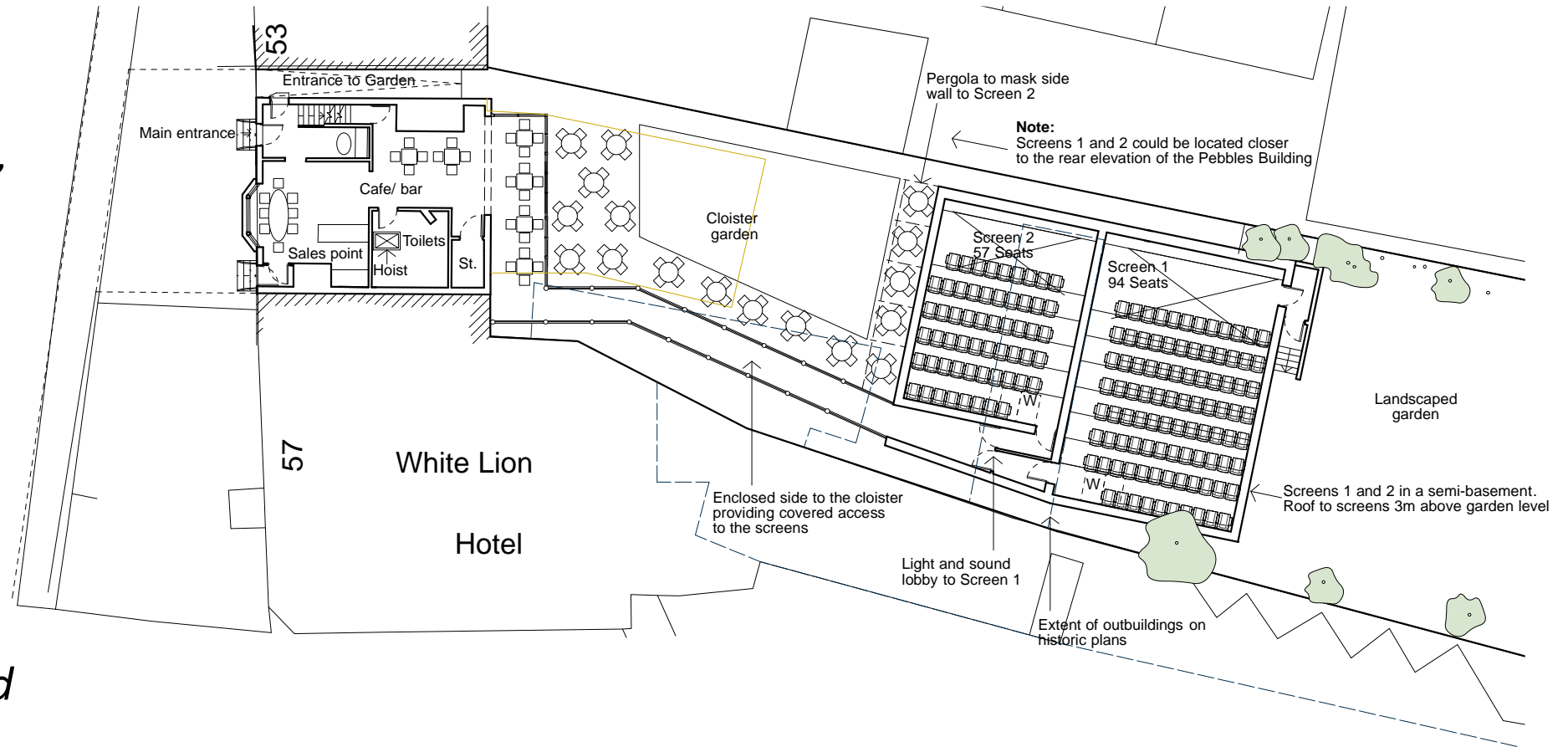
Proposed Sketch section



OUR FOUR MAJOR PROJECTS

Cinema

The Pebbles in the High Street is the preferred site. Cinema Focus Group, architects and councillors are planning the way ahead. The council has earmarked £500,000 for the building restoration. The cinema will be commercially run and funded.





OUR FOUR MAJOR PROJECTS

[HOME](#)[HIREABLE SPACES](#)[WEDDINGS](#)[WHAT'S ON](#)[TENT1 DEVELOPMENT](#)[THE COUNCIL ▼](#)[NEWS](#)[LINKS](#)[CONTACT US](#)

Halls for Hire

An information portal on the Town Council website providing detailed information about local halls/venues for hire is now live. Indicative cost of project: £880.

Hireable Spaces

Tenterden and St. Michaels have a range of facilities that are available to hire. Please click the links below for more details.

[VIEW ALL](#)[COMMUNITY VENUES](#)[COMMERCIAL VENUES](#)[WEDDINGS](#)

Highbury Hall

[More Info ⓘ](#)[Map View 📍](#)

Homewood School

[More Info ⓘ](#)[Map View 📍](#)

The Lemon Tree

[More Info ⓘ](#)[Map View 📍](#)

St Michaels Village Hall

[More Info ⓘ](#)[Map View 📍](#)

St Mildreds Church Hall &
The Glebe Hall



The Tenterden Club



London Beach Country Hotel



Tenterden Leisure Centre



PUTTING YOUR PRIORITIES INTO ACTION

- Parking
- Town Appearance
- High Street Regeneration
- Policing
- Potholes and Pavements



....AND THAT'S NOT ALL

- Unsung community initiatives
- Support to local organisations
- St. Mildred's Church re-ordering
- Friday Street Market
- Christmas light display
- Heritage
- Public toilets



THANK YOU FOR ATTENDING TONIGHT'S MEETING